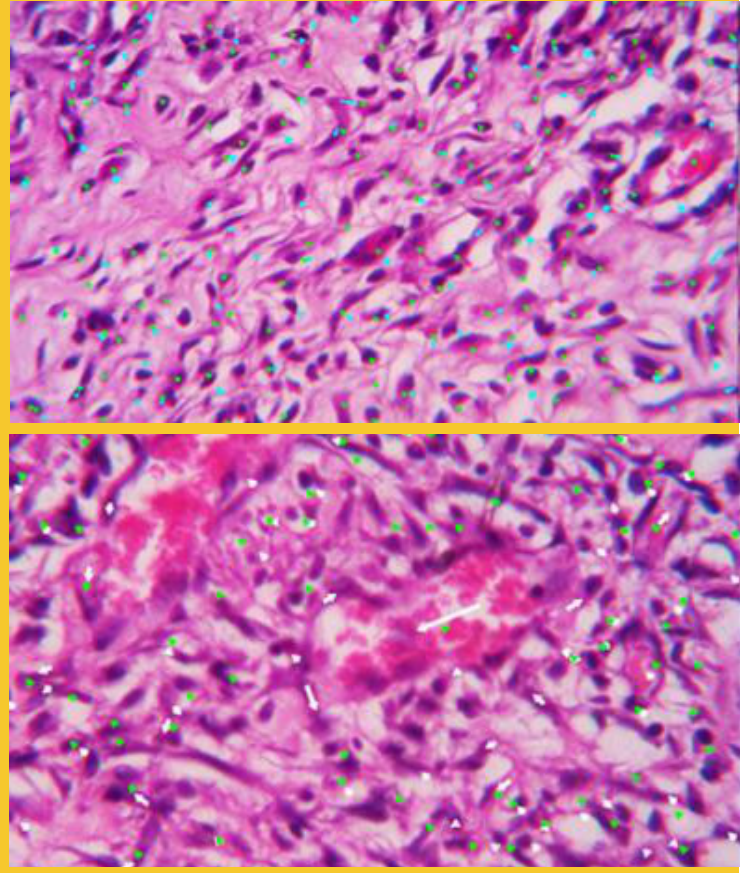




Medical Journal of Indonesia



<http://mji.ui.ac.id>

Published by the Faculty of Medicine Universitas Indonesia
Official Scientific Journal of the
Faculty of Medicine Universitas Indonesia
in collaboration with
German-Indonesia Medical Association (DIGM)
Jl. Salemba Raya No. 6 Jakarta 10430
Telp/Fax +62-21-2302178

- ✓ Editorial
- ✓ Adipose derived stem cell conditioned medium effect on skin wound healing
- ✓ *Mangifera foetida* extracts prevent iron overload
- ✓ *Bryophyllum pinnatum* in B cells of SLE
- ✓ Usp45-MSP-1₁₉ gene construct and production
- ✓ Varicocele grade and semen analysis
- ✓ Ocular diseases in Southwest Sumba
- ✓ Risk factors of declined linear growth
- ✓ Determinants of HIV screening use
- ✓ Gunshot penetrating head injury

Focus and Scope

Medical Journal of Indonesia (abbr: Med J Indones) accepts manuscript in basic medical research, clinical research, community research, case report, review article, and brief communication. The journal publishes articles in health sciences (medicine; public health); biology and life sciences (biomedical sciences).

About

The Medical Journal of Indonesia was founded in 1992 as the Medical Journal of the University of Indonesia (abbr: Med J Univ Indon). It has been published quarterly consistently and continuously ever since, covering a wide range of medical subject and issues from every medical specialist aspect. In 1995 the name was changed to Medical Journal of Indonesia which reflected the widening of its coverage beyond. The mission of this journal is to provide biomedical scientists clinician researchers, public health researchers and other health care professional with the media to publish their research works.

Peer Review Process

The submitted manuscript is first reviewed by an editor. It will be evaluated in the office whether it is suitable with our focus and scope or has a major methodological flaw. Every submitted manuscript which pass this step will be checked by CrossCheck to identify any plagiarism before being reviewed by two reviewers. One of the reviewer is appointed from other institutions (national or international). This journal uses double-blind review, The manuscript will be sent to the reviewer anonymously. Reviewers' comment are also sent anonymously to corresponding author to take the necessary actions and responses. The decision of the revised manuscript will be then evaluated in editorial board meeting, the final decision of whom are sent to the corresponding author.

Publication Frequency

This journal is published quarterly.

Open Access Policy

This journal is an open access journal which provides immediate, worldwide, barrier-free access to the full text of all published articles without charge readers or their institutions for access. Readers have right to read, download, copy, distribute, print, search, or link to the full texts of all articles in Medical Journal of Indonesia.

Abstracting and Indexing

Academic Journals Database; Academic Search Complete - EBSCOhost; Asean Citation Index (ACI); Bielefeld Academic Search Engine (BASE); CAB Abstracts; CiteFactor; China Knowledge Resources Integrated Database (CNKI); Directory of Open Access Journal (DOAJ); Directory of Research Journal Indexing (DRJI); Electronic Journals Library; Embase - Elsevier; Emerging Sources Citation Index - Thomson Reuters; Global Health; Google Scholar; Hinari - WHO; Index Medicus for South East Asia Region (IMSEAR); Indonesian Scientific Journal Database (ISJD); Indonesian Publication Index (IPI); Islamic World Science Citation Centre (ISC); JournalTOCs; PKP Index; Proquest Health & Medical Complete; Scilit - MDPI; Scopus - Elsevier; Ulrichsweb Global Serial Directory; WorldCat.

Advertising Policy

Editorial materials will not be influenced by advertisement. Readers can criticize the advertisement by sending it to the office. Advertisement will appear in the print or online version depending on request. For all inquiries, contact the Medical Journal of Indonesia editorial office at Faculty of Medicine Universitas Indonesia, Jalan Salemba Raya 6, Jakarta Pusat 10430, Indonesia; telp/fax: +62-21-2302178; e-mail: mji@ui.ac.id.

Copyright Notice

Faculty of Medicine Universitas Indonesia as publisher reserves the right of first publication of all published material and licensed under a Creative Commons Attribution-NonCommercial 4.0 International License (<http://creativecommons.org/licenses/by-nc/4.0/>). All statements in articles are the responsibility of the authors.

Subscription

The printed issue should be subscribed for a full calendar year. The price per volume (four issues) and surface postage included: international USD 160, for ASEAN countries USD 100, for Indonesia: institutional IDR 200,000, individual IDR 160,000, and student IDR 100,000.

Editorial Board

Editor-in-chief	Agus Rizal A.H. Hamid Indonesia	
Editor-in-chief Emeritus	Isnani A.S. Suryono Indonesia	
Deputy Editor-in-chief	Nafrialdi Indonesia	
Managing Editor	Felix F. Widjaja Indonesia	
Editorial Board Members	Agnes Kurniawan Indonesia Agus D. Susanto Indonesia Aria Kekalih Indonesia Bambang B. Siswanto Indonesia David H. Garabrant USA Farrokh Habibzadeh Iran Grace Wangge Indonesia Hak Hotta Japan Hans-Joachim Freisleben Germany Hans-Jürgen Mägert Germany Harrina E. Rahardjo Indonesia Inge Sutanto Indonesia Jeanne A. Pawitan Indonesia Jörg Haier Germany	Knut Adermann Germany Laurentius A. Pramono Indonesia Markus Meyer Germany Melva Louisa Indonesia Nia Kurniati Indonesia Pradana Soewondo Indonesia Rianto Setiabudy Indonesia Saleha Sungkar Indonesia Sentot Santoso Germany Sri W.A. Jusman Indonesia Theddeus O.H. Prasetyono Indonesia Vivian Soetikno Indonesia Wilfred C.G Peh Singapore Yuditiya Purwosunu Indonesia
Associate Editor	Apriani Oendari Indonesia Ari Savitri Indonesia	Hariyono Winarto Indonesia
Assistant Editor	Albert Sedjahtera Indonesia Dania Clarisa Indonesia Fekhaza Alfarissi Indonesia	Harun W.K. Putra Indonesia Hasna Afifah Indonesia Ririn R. Febri Indonesia
Production editor	Maylia Putri Indonesia	
Business Manager	Jose R.L. Batubara Indonesia	
Language Editors	Hans-Joachim Freisleben Germany	Elysabeth Muliawan Indonesia
Layout Editor	Yudi Tarmizi Indonesia	
Editorial office	Medical Journal of Indonesia Jl. Salemba Raya 6, Jakarta Pusat 10430, Indonesia Tlp/fax: +62-21-2302178 E-mail: mji@ui.ac.id	
Publisher	Faculty of Medicine Universitas Indonesia Jl. Salemba Raya 6, Jakarta Pusat 10430, Indonesia Tlp/fax: +62 21-3912477 E-mail: humas@fk.ui.ac.id	

Accredited (2013-2018) by the Directorate General of Higher Education of the Ministry of Education and Culture of the Republic of Indonesia (No:58/DIKTI/Kep/2013)
 Published by the Faculty of Medicine, Universitas Indonesia, Jakarta, Indonesia
 Official Scientific Journal of the Faculty of Medicine, Universitas Indonesia
 in Collaboration with German-Indonesian Medical Association (DIGM)
 pISSN 0853-1773 – eISSN 2252-8083
<http://mji.ui.ac.id>

Medical Journal of Indonesia

TABLE OF CONTENTS

Volume 26, Number 4, Desember 2017, page 237–306, pISSN: 0853-1773 - eISSN: 2252-8083

Editorial

- Nafrialdi
F.F. Widjaja **Quarter century of Medical Journal of Indonesia: Between national and international publications for building capacity building** 237

Basic Medical Research

- T. Tarcisia
L. Damayanti
R.D. Antarianto
Y. Moenadjat
J.A. Pawitan **Adipose derived stem cell conditioned medium effect on proliferation phase of wound healing in Sprague Dawley rat** 239
No significant differences on angiogenesis, epithelialization, and collagen density between ADSC-CM treated wound and not. Topically ADSC-CM treated wound revealed a clinical improvement in epithelialization.
- P. Fajri
A. Estuningtyas
M. Louisa
H. Freisleben **The preventive effect of *Mangifera foetida* L. leaf extract administered simultaneously to excess iron on markers of iron overload in Sprague-Dawley rats** 246
Aqueous *Mangifera foetida* L. leaf extract may be useful to prevent iron overload and oxidative stress in thalassemia patients.
- K. Handono
T.W.I. Dantara
E.S. Dewi
M.Z. Pratama
Nurdiana ***Bryophyllum pinnatum* leaves ethanol extract inhibit maturation and promote apoptosis of systemic lupus erythematosus BALB/c mice B cells** 253
Bryophyllum pinnatum leaves ethanol extract decreased the percentages of maturation (CD19+CD38+) of B cells, increased the percentage of apoptosis (Annexin V+PI+), and decreased NF- κ B p65 expressions in pristane-induced SLE BALB/c mice B cells *in vitro*.
- A.V.A. Kusuma
A.Z. Mustopa
W.Z. Mustafawi
Suharsono **The production of SPusp45-MSP-1₁₉ gene construct and its recombinant protein in *Lactococcus lactis* to be used as a malaria vaccine** 261
The constructions of MSP-1 gene and its protein expression in *Lactococcus lactis* have been successfully performed as confirmed by the SDS-PAGE and dot blot hybridization analysis.

Clinical Research

- I. Ariyati
R. Mulyadi
P. Birowo
B. Wiweko
J. Prihartono **Association between varicocele grade and semen analysis parameter** 270
There was significant association between grade of varicocele based on ultrasound examination and sperm analysis component.

Community Research

- R. Sitompul
Y.D. Lestari
S. Siregar
A. Ayudianingrum
Isfiyanto
G. Kusumowidagdo
D.P. Sari
E.B. Matiur
S. Sungkar** **The burden of ocular diseases in an underdeveloped village in Southwest Sumba, Eastern Indonesia, 2016** **277**
Visual impairment and blindness are major health problems in developing countries. This survey highlights the importance of ocular diseases requiring eye care in underdeveloped area.

- H. Gunardi
Soedjatmiko
R. Sekartini
B.E. Medise
A.C. Darmawan
R. Armeilia
R. Nadya** **Association between parental socio-demographic factors and declined linear growth of young children in Jakarta** **286**
Among parental socio-demographic factors investigated, maternal education was the contributing factor to the declined linear growth in children aged less than 2 years old in Jakarta.

- S. Handayani
S. Andajani
L. Djuari** **Determinants of HIV provider-initiated testing and counseling screening service used by pregnant women in primary health centers in Surabaya** **293**
Free screening of human immunodeficiency virus through provider-initiated testing and counseling (PITC) method among pregnant women attending antenatal care in public health centers in Surabaya.

Case Report

- S. Tandean
M. Risfandi
I. Japardi** **Pediatric gunshot penetrating head injury: a case report with 2-year follow-up** **302**
Pediatric gunshot penetrating head injury is a rare and challenging case. The patient in this case report had a good outcome, which is consistent with St. Louis scale for pediatric gunshot head injury.

- Acknowledgment of Year 2017 Reviewers** **i**

- Index of Medical Journal of Indonesia Volume 26, January-December 2017** **iv**

Front Page: Angiogenesis during wound healing of the skin in response to adipose-derived stem cell, as reported by Triscia et al that is published in this issue.

Contents

See the journal website for contents.

Index Medical Journal of Indonesia

Volume 26, January–December 2017

Author index

Achmad H.R	(1):47-53	Hamid A.R.A.H	(3):229-36
Aditianingsih D	(2):134-40	Handayani S	(4):293-301
Aditya C.J	(1):70-5	Handono K	(4):253-60
Afandi D	(2):97-101	Hardiany N.S	(1):19-25
Ahmed A	(3):218-23	Heriwardito A	(2):116-21
Akram R	(3):218-23	Hossain N	(2):102-8
Alfarissi F	(3):229-36	Icksan A	(1):40-6
Alimuddin S	(3):224-8	Indrayana M.T	(2):97-101
Alsakee H.M	(3):190-7	Indriatmi W	(2):90-6
Alwahdy A.S	(3):183-9	Irwindi R	(2):109-15
Amanda A.P	(1):35-9	Isfiyanto	(4):277-85
Amin Z	(1):35-9	Islam S.M.S	(2):102-8
Andajani S	(4):293-301	Japardi I	(4):302-6
Anggrahita T	(1):54-61	Javed S	(3):218-23
Antarianto R.D	(4):239-45	Juliandi B	(3):183-9
Ariyati I	(4):270-6	Kaleem M	(3):218-23
Armeilia R	(4):286-92	Kato M	(1):14-8
Atmoko W	(3):212-7	Kato M	(3):178-82
Ayudianingrum A	(4):277-85	Khadijah A	(3):212-7
Azeez S.S	(3):190-7	Kresno S.B	(3):204-11
Bahri S	(1):7-13	Kurniawan	(1):62-9
Bardosono S	(1):47-53	Kurniawan M	(3):183-9
Bardosono S	(2):109-15	Kusuma A.V.A	(4):261-9
Bardosono S	(3):204-11	Kusumowidagdo G	(4):277-85
Basukarno A	(2):128-33	Layal K	(3):169-77
Birowo P	(2):128-33	Leopando Z.E	(2):141-51
Birowo P	(3):212-7	Lestari Y.D	(4):277-85
Birowo P	(4):270-6	Louisa M	(1):14-8
Chozie N.A	(1):47-53	Louisa M	(3):169-77
Damayanti L	(4):239-45	Louisa M	(3):178-82
Danisha D	(2):97-101	Louisa M	(4):246-52
Dantara T.W.I	(4):253-60	Mamudi C.O	(1):35-9
Darmawan A.C	(4):286-92	Marbun M.B.H	(3):229-36
Deswanto I.A	(2):128-33	Marsaban A.H.M	(2):116-21
Dewanto N.E.F	(3):204-11	Matiur E.B	(4):277-85
Dewi E.S	(4):253-60	Medise B.E	(4):286-92
Dharma R	(1):47-53	Mochtar C.A	(3):229-36
Dharmasetiawani N	(3):204-11	Moeloe N.F	(1):3-6
Djaja A.S	(2):134-40	Moenedjat Y	(4):239-45
Djuari L	(4):293-301	Mulyadi R	(4):270-6
Dwiputra B	(2):152-7	Mustafawi W.Z	(4):261-9
Efendi I	(2):90-6	Mustopa A.Z	(4):261-9
Estuningtyas A	(4):246-52	Nadya R	(4):286-92
Faisal A	(1):40-6	Nafrialdi	(4):237-8
Fajri P	(4):246-52	Nareswari I	(1):26-34
Fattah A.N.A	(3):198-203	Nugraha I	(2):97-101
Firmansyah A	(3):204-11	Nurdiana	(4):253-60
Freisleben H	(2):83-5	Parikesit D	(3):212-7
Freisleben H	(4):246-52	Pawitan J.A	(3):167-8
Gatot D	(1):47-53	Pawitan J.A	(4):239-45
George Y.W.H	(2):134-40	Perdhana I.S	(3):169-77
Gultom D.A	(2):90-6	Poh K.K	(2):152-7
Gunardi H	(4):286-92	Posangi J	(1):62-9
Gunawan P.I	(1):76-80	Prameswari N	(2):109-15
Haier J	(2):83-5	Prasetyo D	(3):204-11
Hamid A.R.A.H	(1):1-2	Prasetyo M	(1):47-53
		Prasetyo M	(2):122-7
		Pratama M.Z	(4):253-60

- Prayuni K (1):7–13
- Prihartono J (4):270–6
- Puteri M.U (1):14–8
- Puteri M.U (3):178–82
- Putra D.E (3):212–7
- Putri A.S (2):109–15
- Rahman A.E (2):102–8
- Rahmawati F.N (1):35–9
- Ramli Y (3):183–9
- Rampengan N (1):62–9
- Rasyid N (2):128–33
- Rasyid N (3):212–7
- Rasyid N (3):229–36
- Razari I (1):7–13
- Razzaque M.A (3):218–23
- Rengganis I (3):224–8
- Rinawan F (2):141–51
- Risfandi M (4):302–6
- Rodjani A (3):229–36
- Rosana Y (2):90–6
- Sadikin M (1):19–25
- Saharso D (1):76–80
- Salamah T (2):122–7
- Santoso A (2):152–7
- Santoso B.I (3):198–203
- Sari D.P (4):277–85
- Sari T.T (1):47–53
- Sastroasmoro S (3):204–11
- Schäfers J (2):83–5
- Sekartini R (1):70–5
- Sekartini R (4):286–92
- Setiabudy R (1):14–8
- Setiabudy R (3):178–82
- Setiawati E.P (2):141–51
- Simadibrata C (1):26–34
- Siregar N (1):19–25
- Siregar S (4):277–85
- Siregar T.P (2):122–7
- Sitompul R (4):277–85
- Soedjatmiko (4):286–92
- Soeroto A.A (3):229–36
- Soetikno V (3):169–77
- Srilestari A (1):26–34
- Sudjatmiko G (1):54–61
- Suharsono (4):261–9
- Sukrisman L (1):47–53
- Sungkar A (3):198–203
- Sungkar A (3):204–11
- Sungkar S (4):277–85
- Suradi R (3):204–11
- Surya R (3):198–203
- Susalit E (3):229–36
- Susanto A.J (3):224–8
- Susanto Y.D.B (3):183–9
- Susilowati R.W (1):7–13
- Syafitri I (2):109–15
- Syahrudin E (1):40–6
- Taher A (2):86–9
- Tandean S (4):302–6
- Tanoto R (2):141–51
- Tarcisia T (4):239–45
- Tarigan T.J.E (1):26–34
- Tulaar A.B.M (1):47–53
- Wahyudi I (3):229–36
- Wanandi S.I (1):19–25
- Wangge G (2):81–2
- Wardhana A (1):54–61
- Wardhani B.W.K (1):14–8
- Wardhani B.W.K (3):178–82
- Watanabe Y (1):14–8
- Watanabe Y (3):178–82
- Werdhani R.A (2):158–66
- Wibowo N (2):109–15
- Widjaja F.F (4):237–8
- Widyahening I.S (2):141–51
- Wiweko B (4):270–6
- Wuyung P.E (3):183–9
- Yasmon A (2):90–6
- Yuliwulandari R (1):7–13
- Yundha I.G.N.A.D (2):116–21
- Zalud I (3):198–203
- Zaman A.U (3):218–23
- Zaman S.B (2):102–8

Subject index

- Accelerate wound healing rate (1):26–34
- ACL (3):118–23
- ADSC-CM (4):239–45
- Adult PTB (1):40–6
- Allergic rhinitis (3):124–8
- Angiogenesis (4):239–45
- Antibiotics (1):62–9
- ARDS (1):35–9
- Arthropathy (1):47–53
- Arthroscopy (3):118–23
- Asthma (3):124–8
- Aziza's scoring system (1):40–6
- B cells (4):253–60
- Balanced electrolyte solution (2):134–40
- Behavioral disorders (1):70–5
- Bifidobacterium lactis animalis* HNO19 (3):204v11
- Bladder stone (2):128–33
- Blindness (4):277–85
- Botox (1):76–80
- Breastmilk (3):204–11
- Bryophyllum pinnatum* (4):253–60
- BURP maneuver (2):116–21
- Calcaneus bone (2):122–7
- Cardiovascular response (2):116–21
- Cell survival (1):19–25
- Cerebral palsy (1):76–80
- Children (1):70–5
- Children (4):286–92
- Chlorhexidine-alcohol (1):54–61
- Chronic kidney disease (3):169–77
- Clinical profile (1):35–9
- CMAC® (2):116–21
- Collagen density (4):239–45
- Concentrated HIV epidemic area (4):293–301
- Conventional Macintosh (2):116–21
- CRISPR/Cas9 (1):14–8
- Cryptosporidiosis (3):190–7
- Cystolithotripsy (2):128–33
- Diabetic CKD (2):102–8
- Diabetic foot ulcer (1):26–34

Diabetic ketoacidosis	(2):134-40	Pediatric	(4):302-6
Digital radiography	(2):122-7	Plantar aponeurosis	(2):122-7
Doctor	(2):158-66	Plantar fasciitis	(2):122-7
Domestic violence	(2):97-101	Polymorphism	(1):7-13
Drinking	(3):212-7	Postgraduate training	(2):141-51
EGFR	(2):102-8	Povidone-iodine	(1):54-61
Emotional disorders	(1):70-5	Pregnancy	(2):109-15
Epithelialization	(4):239-45	Pregnant women	(4):293-301
ESWL	(2):128-33	Preterm birth	(3):198-203
Family medicine	(2):141-51	Prevalence	(2):97-101
Fe level	(4):246-52	Prevalence	(3):198-203
First trimester	(2):109-15	Primary care	(2):158-66
Forensic examination finding	(2):97-101	Primary care physician	(2):141-51
Gastroenteritis	(3):190-7	Pristane	(4):253-60
Gene editing	(1):14-8	Proliferation	(3):178-82
General practice	(2):141-51	Pro-protein convertase subtilisin kexin-9	(2):152-7
Glioblastoma multiforme	(1):19-25	PSC-17	(1):70-5
Glycated hemoglobin	(2):102-8	Quercetin	(3):169-77
Gunshot penetrating head injury	(4):302-6	Rat	(3):183-9
Gut mucosal integrity	(3):204-11	Resistance	(1):62-9
HEAD-US	(1):47-53	Risk factor	(3):198-203
Hemophilia	(1):47-53	Risk factor	(4):286-92
HIV PITC screening	(4):293-301	ROS	(1):19-25
HJHS	(1):47-53	Rotavirus	(3):190-7
House dust mites	(3):124-8	Sectio alta	(2):128-33
Hyperchloremic acidosis	(2):134-40	Self-medication	(1):62-9
IgE sensitization	(3):124-8	Semen analysis	(4):270-6
Indonesia	(3):129-36	Skin antiseptis	(1):54-61
Indonesia	(4):277-85	SLE	(4):253-60
Indonesian Malay ethnic	(1):7-13	Slow acetylator	(1):7-13
Inhibitor factor VIII	(1):47-53	Socio-demographic	(4):286-92
Iron overload	(4):246-52	SOD activity	(4):246-52
Kidney	(3):129-36	Southwest Sumba	(4):277-85
Knee	(3):118-23	Spasticity	(1):76-80
Knock-out cell lines	(1):14-8	Specific IgE	(3):124-8
Knowledge	(1):62-9	Standard base excess	(2):134-40
<i>Lactococcus lactis</i>	(4):261-9	Strong ion difference	(2):134-40
Laryngoscopy	(2):116-21	Stunting	(4):286-92
Laser-puncture	(1):26-34	Surgical site infection	(1):54-61
Leadership	(2):158-66	Survivors	(1):35-9
Limited slice non-enhanced thoracic CT	(1):40-6	Syphilis	(2):90-6
Low density lipoprotein	(2):152-7	T98G cells	(1):19-25
Malaria	(4):261-9	TGF- β	(3):178-82
<i>Mangifera foetida</i> L. leaf extract	(4):246-52	Thailand	(2):102-8
Mangiferin	(4):246-52	TMEPAI	(3):178-82
Maternal education	(4):286-92	Transplantation	(3):129-36
Merozoite surface protein 1	(4):261-9	<i>Treponema pallidum</i> resistance	(2):90-6
Middle cerebral artery occlusion	(3):183-9	Triple negative breast cancer	(3):178-82
MnSOD-siRNA	(1):19-25	Ultrasonography	(2):122-7
Monofilament	(3):183-9	Ultrasound examination	(4):270-6
MRI	(3):118-23	Underdeveloped district	(4):277-85
NAT2	(1):7-13	Universal health coverage	(2):141-51
Nephrectomy	(3):169-77	Urban primary health center	(4):293-301
Nisin	(4):261-9	Urinary bladder	(3):212-7
Normal saline	(2):134-40	Uroflowmetry	(3):212-7
Nrf2	(3):169-77	Usp45-MSP-1 ₁₉	(4):261-9
Nutrient intake	(2):109-15	Vaccine	(3):190-7
Nutritional status	(2):109-15	Varicocele's grade	(4):270-6
Obesity	(1):70-5	Visual impairment	(4):277-85
Outcome	(3):198-203	Waiting time	(3):212-7
Oxidative stress	(3):169-77	Women	(2):97-101
PCR	(2):90-6	Wound	(2):97-101
PCSK-9 inhibitor	(2):152-7	Wound healing	(4):239-45

Medical Journal of Indonesia

Instructions for Authors

Submission

The submitted manuscript should be addressed to Editor-in-chief of the Medical Journal of Indonesia. Manuscript must be submitted through online submission (<http://mji.ui.ac.id/journal/index.php/mji/about/submissions>) by registered users. You can easily register in the journal system. For further question contact us at: mji@ui.ac.id.

General Principles

As a basic requirement, all articles submitted to the Medical Journal of Indonesia must be original work, which has never been published previously and is submitted exclusively to the Medical Journal of Indonesia. They are written in the format of "Recommendations for the Conduct, Reporting, Editing and Publication of Scholarly Work in Medical Journals" (<http://www.icmje.org/>) updated August 2013 established by the International Committee of Medical Journal Editors (ICMJE). The Editorial Board reserves the right to edit all articles in aspects of style, format, and clarity. Authors may be required to revise their manuscripts for reasons of any aspect. Manuscripts with excessive errors in any aspect may be returned to authors for retyping or may be rejected. All manuscripts will be subjected to peer and editorial review.

We accept four types of articles: (1) original articles: **basic medical research, clinical research, or community research**; (2) **case report**; (3) **review article**; (4) **brief communication** (including **preliminary reports**).

Authors must also supply ICMJE conflicts of interest statement form (http://mji.ui.ac.id/journal/public/journals/1/coi_disclosure.pdf), copy of ethical approval (when needed), and final checklist (<http://mji.ui.ac.id/journal/public/journals/1/FinalChecklist.pdf>) signed by all author(s).

Templates are available on <http://mji.ui.ac.id/journal/public/journals/1/template1.dot> for original articles and <http://mji.ui.ac.id/journal/public/journals/1/template2.dot> for case report.

Study Ethics

All submitted papers containing animal experiments and/or involving human subjects should have obtained approval from an independent ethics committee. The copy of approval should be provided to editorial office as mentined above.

Publication Ethics

This journal follows guidelines from Committee on Publication Ethics (COPE) in facing all aspects of publication ethics and, in particular, how to handle cases of research and publication misconduct.

Structure and Language

Articles will be published in US English, following American spelling. Articles in English that are linguistically inadequate may be rejected. Printed manuscripts should be written double-spaced in all parts of the manuscript with margin of 2.54 cm of all sides. Articles must be submitted in the following structural order: title page and

authorship, abstract, keywords, text, conflicts of interest, acknowledgments (if any), references, tables, figures, and legends (if any).

Title Page and Authorship

The title page should contain: title of the article (concise, no abbreviations, maximum 16 words); full names of authors (without academic title); author's affiliation [name(s) of department(s) and institution(s)]; disclaimers (if any); corresponding author's name, mailing address, telephone and fax numbers, and e-mail address of the author responsible for correspondence about the manuscript (E-mail address of the coresponding author will be published along with the article); source(s) of support in the form of grants, equipment, drugs, or all of these (if any); short running title [maximum 40 characters (letter and spaces)]; word counts [A word count for the text only (excluding abstract, acknowledgments, tables, figure legends, and references)]; number of figures and tables; and synopsis (should contain one or two sentences long with maximum 25 words describing the paper or its conclusion to be published in the table of contents of the Medical Journal of Indonesia).

Authorship of articles should be limited to those who have contributed sufficiently to take public responsibility for the contents. This includes (a) conception and design, or analysis and interpretation of data, or both; (b) drafting the article or revising it critically for important intellectual content; (c) final approval of the version to be published; (d) and agreement to be accountable for all aspects of the work in ensuring that questions related to the accuracy or integrity of any part of the work are appropriately investigated and resolved.

Abstract and Keywords

The **abstract** should be prepared in English and in Bahasa Indonesia with a structured abstract maximum 250 words for biomedical, clinical, and community research articles; and unstructured maximum 150 words for case report, brief communication, and review article. For non-Indonesian authors, abstract in Bahasa Indonesia will be translated by the editor. They should be concise and precise with enough information, highlighting the points and importance of the article which contains: One or two sentences of background, purpose of study; methods (basic procedures, study subject selection, observational, and analytical methods); main findings or results; and principal conclusion. **Keywords** are limited to 3 - 6 words or short phrases that will allow proper and convenient indexing.

Text

The **text** should be structured as **introduction, methods, results, and discussion** (IMRAD). Conclusion should be stated at last sentence in the discussion. Footnotes are not advisable; their contents should rather be incorporated into the text. Use only standard abbreviations; use of nonstandard abbreviations can be confusing to readers. Avoid abbreviations in the title of the manuscript. The spelled-out abbreviation followed by the abbreviation

in parenthesis should be used on first mention unless the abbreviation is a standard unit of measurement. If a sentence begins with a number, it should be spelled out. Cite in numerical order every reference, figure and table. Use Arabic numerals in superscript to cite references in Vancouver style.

Statistical Methods

All **statistical methods** used should be describe in detail in the methods section of the manuscript. Avoid relying solely on statistical hypothesis testing, such as p values, which fail to convey important information about effect size. Define statistical terms, abbreviations, and most symbols. Specify the computer software used.

Conflicts of Interest

Conflict of interest should declare the authors' conflicts of interest, sources of support for the work, and whether the authors had access to the study data. Each author should submit a separate form from ICMJE, given above and be sent to the office at submission. The description of conflict of interest in this form will be shown in this part.

Acknowledgments

Personal **acknowledgments** should be limited to appropriate professionals who contributed to the paper, including technical help and financial or material support, also general support by a department chair-person.

Tables

Tables and its title should be presented in separate sheets. Tables should be numbered in arabic numerals, captions should be brief, clearly indicating the purpose or content of each table. Provide a footnote to each table, identifying in alphabetical order all abbreviations used. Type or print each table with double-spacing on a separate sheet of paper. Number tables consecutively in the order of their first citation in the text and supply a brief title for each. Do not use internal horizontal or vertical lines. Give each column a short or an abbreviated heading. Explain all nonstandard abbreviations and explanatory matters in footnotes, and for explanatory matters use the following symbols, in sequence: *, †, ‡, §, ||, ¶, **, ††, ‡‡, §§, ||||, ¶¶, etc. Identify statistical measures of variations, such as standard deviation and standard error of the mean. Be sure that each table is cited in the text. If you use data from another published or unpublished source, obtain permission and acknowledge that source fully.

Figures

Figures should be either professionally drawn or photographed, and submitted in a format (JPEG or TIFF) in the following resolutions [gray-scale or color in RGB (red, green, blue mode) at least 300 dpi (dots per inch). For x-ray films, scans, and other diagnostic images, as well as pictures of pathology specimens or photomicrographs, send sharp, glossy, black-and-white or color photographic prints, usually 127 x 173 mm (5 x

7 inches). Write the word "top" on the back of each figure at the appropriate place. Figures should be made as self-explanatory as possible, titles and detailed explanations belong in the legends-not on the figures themselves. Photomicrographs should have internal scale markers. Symbols, arrows, or letters used in photomicrographs should contrast with the background. Photographs of potentially identifiable people must be accompanied by written permission to use the photograph.

Figures should be numbered consecutively according to the order in which they have been cited in the text. If a figure has been published previously, acknowledge the original source and submit written permission from the copyright holder to reproduce the figure. Permission is required irrespective of authorship or publisher except for documents in the public domain. Color figures are allowed in special circumstances, provided that the author is willing to cover the cost of reproduction.

If the original size of the figures is too large, you can provide us lower quality figures on submission and good quality after the acceptance of the manuscript.

Legends for Figures

Type or print out **legends for figures** using double spacing, starting on a separate page, with Arabic numerals corresponding to the figures. When symbols, arrows, numbers, or letters are used to identify parts of the illustrations, identify and explain each one clearly in the legend. Explain the internal scale and identify the method of staining in photomicrographs.

Units of Measurement

For measurements use S.I. (System International) units. Measurements should be abbreviated (e.g. mm, kcal, etc.) in accordance to the Style Manual for Biological Sciences and using the metric system. Measurements of length, height, weight, and volume should be reported in appropriate scientific units. Temperatures should be in degrees Celsius. Blood pressures should be in millimeters of mercury (mmHg). Drug concentrations may be reported in either SI or mass units, but the alternative should be provided in parentheses where appropriate.

References

References are advisably not to exceed 25 in number but not less than 10, and should in general be limited to the last decade. Reference exceed than 25 may be accepted when it is necessary. References must be numbered in the order in which they are mentioned in the text. Use the style of the examples below, which are based on the International Committee of Medical Journal Editors (ICMJE) Recommendations for the Conduct, Reporting, Editing and Publication of Scholarly Work in Medical Journals: Sample References (http://www.nlm.nih.gov/bsd/uniform_requirements.html). The titles of journals should be abbreviated according to the style used for MEDLINE (www.ncbi.nlm.nih.gov/nlmcatalog/journals). Avoid using abstracts as references. Information from manuscripts submitted but not yet accepted should be cited in the text

as “unpublished observations” with written permission from the source. Papers accepted but not yet published may be included as references; designate the journal and add “Forthcoming”. Avoid citing “personal communication” unless it provides essential information not available publicly, name the person and date of communication, obtain written permission and confirmation of accuracy from the source of a personal communication. Authors is recommended to use reference management software, in writing the citations and references such as: Mendeley®, Zotero®, EndNote®, and Reference Manager®.

Here are some examples of the references:

1. **Standard journal article**

Up to six authors, list all the authors.

- Halpern SD, Ubel PA, Caplan AL. Solid-organ transplantation in HIV-infected patients. *N Engl J Med.* 2002 Jul 25;347(4):284-7.

More than six authors, list the first six authors, followed by et al.

- Rose ME, Huerbin MB, Melick J, Marion DW, Palmer AM, Schiding JK, et al. Regulation of interstitial excitatory amino acid concentrations after cortical contusion injury. *Brain Res.* 2002;935(1-2):40-6.

Optional addition of a database's unique identifier for the citation: [Edited 12 May 2009]

- Halpern SD, Ubel PA, Caplan AL. Solid-organ transplantation in HIV-infected patients. *N Engl J Med.* 2002 Jul 25;347(4):284-7. PubMed PMID: 12140307.
- Forooghian F, Yeh S, Faia LJ, Nussenblatt RB. Uveitic foveal atrophy: clinical features and associations. *Arch Ophthalmol.* 2009 Feb;127(2):179-86. PubMed PMID: 19204236; PubMed Central PMCID: PMC2653214.

Optional addition of a clinical trial registration number: [Added 12 May 2009]

- Trachtenberg F, Maserejian NN, Soncini JA, Hayes C, Tavares M. Does fluoride in compomers prevent future caries in children? *J Dent Res.* 2009 Mar;88(3):276-9. PubMed PMID: 19329464. ClinicalTrials.gov registration number: NCT00065988.

As an option, if a journal carries continuous pagination throughout a volume (as many medical journals do) the month and issue number may be omitted.

- Halpern SD, Ubel PA, Caplan AL. Solid-organ transplantation in HIV-infected patients. *N Engl J Med.* 2002;347:284-7.

2. **Chapter in a book**

Meltzer PS, Kallioniemi A, Trent JM. Chromosome alterations in human solid tumors. In: Vogelstein B, Kinzler KW, editors. *The genetic basis of human cancer.* New York: McGraw-Hill; 2002. p. 93-113.

3. **Homepage/Web site [Edited 12 May 2009]**

Cancer-Pain.org [Internet]. New York: Association of Cancer Online Resources, Inc.; c2000-01 [updated 2002 May 16; cited 2002 Jul 9]. Available from: <http://www.cancer-pain.org/>.

Copyright Licenses

Authors who publish with Medical Journal of Indonesia agree to the following terms:

1. Authors retain copyright and grant Medical Journal of Indonesia right of first publication with the work simultaneously licensed under a Creative Commons Attribution-NonCommercial License (<http://creativecommons.org/licenses/by-nc/4.0/>) that allows others to remix, adapt, build upon the work non-commercially with an acknowledgement of the work's authorship and initial publication in Medical Journal of Indonesia.
2. Authors are permitted to copy and redistribute the journal's published version of the work non-commercially (e.g., post it to an institutional repository or publish it in a book), with an acknowledgement of its initial publication in Medical Journal of Indonesia.

Publication Fee

This journal only charges the article publication fee for all manuscript types, without any submission fee. The publication fee is US\$ 300 for foreign authors and IDR 3,000,000,- for Indonesian authors. For each printed page that contains colored figure, you will be asked to pay US\$ 50 (IDR 500,000,-) each printed page more.

When the accepted manuscript has been proofread by the authors, Medical Journal of Indonesia office will send the invoice to the corresponding author and they need to complete the payment process before being published.

To enhance the research in health programme, Medical Journal of Indonesia will cover the publication fee of authors from the countries that are included in group A and group B countries of HINARI by WHO. Waiver of payment is not only limited to those countries. All authors may ask a waive, and they need to send letter of waiver to editor-in-chief explaining the importance of the study and why author(s) need to be waived. The decision is made prior to the process of the review and it is the editors' privilege to approve or reject the request.

Updated - March 2017

