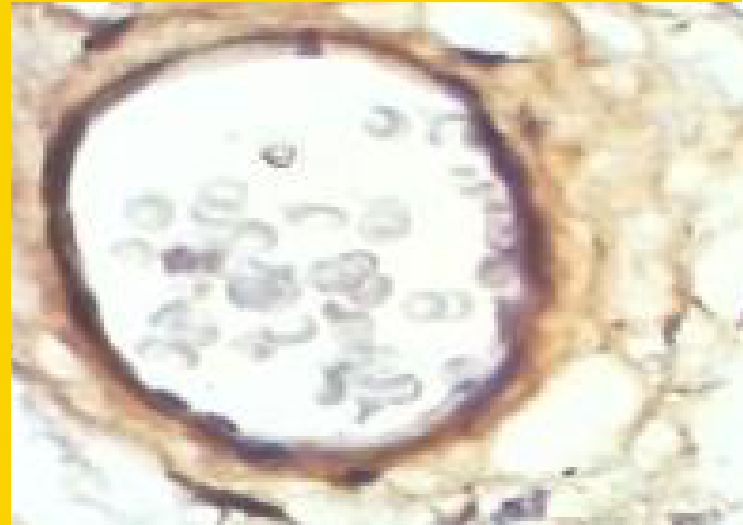




# Medical Journal of Indonesia



<http://mji.ui.ac.id>

Published by the Faculty of Medicine Universitas Indonesia  
Official Scientific Journal of the  
Faculty of Medicine Universitas Indonesia  
in collaboration with  
German-Indonesia Medical Association (DIGM)  
Jl. Salemba Raya No. 6 Jakarta 10430  
Telp/Fax +62-21-2302178

- ✓ Editorial
- ✓ Trehalose pre-incubation in stem cells
- ✓ Cytotoxic activity of *A. muricata* leaves extract
- ✓ Endothelial junction protein expression of placental capillaries
- ✓ Cardiac functions tests in sickle cell anemia
- ✓ ABCB1 gene polymorphism and neutropenia
- ✓ Persistent stress urinary incontinence
- ✓ *Candida* colonization in NICU
- ✓ Sepsis after congenital cardiac surgery
- ✓ CMV papillitis in immunodeficiency





## Focus and Scope

Medical Journal of Indonesia (abbr: Med J Indones) accepts manuscript in basic medical research, clinical research, community research, case report, review article, and brief communication. The journal publishes articles in health sciences (medicine; public health); biology and life sciences (biomedical sciences).

## About

The Medical Journal of Indonesia was founded in 1992 as the Medical Journal of the University of Indonesia (abbr: Med J Univ Indon). It has been published quarterly consistently and continuously ever since, covering a wide range of medical subject and issues from every medical specialist aspect. In 1995 the name was changed to Medical Journal of Indonesia which reflected the widening of its coverage beyond. The mission of this journal is to provide biomedical scientists clinician researchers, public health researchers and other health care professional with the media to publish their research works.

## Peer Review Process

The submitted manuscript is first reviewed by an editor. It will be evaluated in the office whether it is suitable with our focus and scope or has a major methodological flaw. Every submitted manuscript which pass this step will be checked by CrossCheck to identify any plagiarism before being reviewed by two reviewers. One of the reviewer is appointed from other institutions (national or international). This journal uses double-blind review, The manuscript will be sent to the reviewer anonymously. Reviewers' comment are also sent anonymously to corresponding author to take the necessary actions and responses. The decision of the revised manuscript will be then evaluated in editorial board meeting, the final decision of whom are sent to the corresponding author.

## Publication Frequency

This journal is published quarterly.

## Open Access Policy

This journal is an open access journal which provides immediate, worldwide, barrier-free access to the full text of all published articles without charge readers or their institutions for access. Readers have right to read, download, copy, distribute, print, search, or link to the full texts of all articles in Medical Journal of Indonesia.

## Abstracting and Indexing

Academic Journals Database; CAB Abstracts; CiteFactor; China Knowledge Resources Integrated Database (CNKI); Directory of Open Access Journal (DOAJ); Directory of Research Journal Indexing (DRJI); Academic Search Complete - EBSCOhost; Electronic Journals Library; Emerging Sources Citation Index - Thomson Reuters; Global Health; Google Scholar; Hinari - WHO; Index Medicus for South East Asia Region (IMSEAR); Indonesian Scientific Journal Database (ISJD); Indonesian Publication Index (IPI); InnoSpace - SJIF Scientific Journal Impact Factor; JournalTOCs; New Jour; Open Access Articles; Proquest Health & Medical Complete; Scopus; Ulrichsweb Global Serial Directory; WorldCat.

## Advertising Policy

Editorial materials will not be influenced by advertisement. Readers can criticize the advertisement by sending it to the office. Advertisement will appear in the print or online version depending on request. For all inquiries, contact the Medical Journal of Indonesia editorial office at Faculty of Medicine Universitas Indonesia, Jalan Salemba Raya 6, Jakarta Pusat 10430, Indonesia; telp/fax: +62-21-2302178; e-mail: [mji@ui.ac.id](mailto:mji@ui.ac.id).

## Copyright Notice

Faculty of Medicine Universitas Indonesia as publisher reserves the right of first publication of all published material and licensed under a Creative Commons Attribution-NonCommercial 4.0 International License (<http://creativecommons.org/licenses/by-nc/4.0/>). All statements in articles are the responsibility of the authors.

## Subscription

The printed issue should be subscribed for a full calendar year. The price per volume (four issues) and surface postage included: international USD 160, for ASEAN countries USD 100, for Indonesia: institutional IDR 200,000, individual IDR 160,000, and student IDR 100,000.

## Editorial Board

<b>Editor-in-chief</b>	<b>Nafrialdi</b> Indonesia	
<b>Editor-in-chief Emeritus</b>	<b>Isnani A.S. Suryono</b> Indonesia	
<b>Deputy Editor-in-chief</b>	<b>Jeanne A. Pawitan</b> Indonesia	
<b>Editorial Board Members</b>	<b>Agnes Kurniawan</b> Indonesia <b>Agus D. Susanto</b> Indonesia <b>Aria Kekalih</b> Indonesia <b>Bambang B. Siswanto</b> Indonesia <b>David H. Garabrant</b> USA <b>Farrokh Habibzadeh</b> Iran <b>Grace Wangge</b> Indonesia <b>Hak Hotta</b> Japan <b>Hans-Joachim Freisleben</b> Germany <b>Hans-Jürgen Mägert</b> Germany <b>Harrina E. Rahardjo</b> Indonesia <b>Inge Sutanto</b> Indonesia <b>Knut Adermann</b> Germany <b>Laurentius A. Pramono</b> Indonesia	<b>Markus Meyer</b> Germany <b>Melva Louisa</b> Indonesia <b>Nia Kurniati</b> Indonesia <b>Pradana Soewondo</b> Indonesia <b>Rianto Setiabudy</b> Indonesia <b>Saleha Sungkar</b> Indonesia <b>Sentot Santoso</b> Germany <b>Septelia I. Wanandi</b> Indonesia <b>Sri W.A. Jusman</b> Indonesia <b>Theddeus O.H. Prasetyono</b> Indonesia <b>Vivian Soetikno</b> Indonesia <b>Wilfred C.G Peh</b> Singapore <b>Yuditiya Purwosunu</b> Indonesia
<b>Editorial Assistants</b>	<b>Felix F. Widjaja</b> Indonesia	<b>Devita A. Prabowo</b> Indonesia
<b>Business Manager</b>	<b>Jose R.L. Batubara</b> Indonesia	
<b>Language Editors</b>	<b>Hans-Joachim Freisleben</b> Germany	<b>Elysabeth Muliawan</b> Indonesia
<b>Secretary</b>	<b>Khadijah Buyoyok</b> Indonesia	
<b>Layout Editor</b>	<b>Yudi Tarmizi</b> Indonesia	
<b>Editorial office</b>	<b>Medical Journal of Indonesia</b> Jl. Salemba Raya 6, Jakarta Pusat 10430, Indonesia Tlp/fax: +62-21-2302178 E-mail: mji@ui.ac.id	
<b>Publisher</b>	<b>Faculty of Medicine Universitas Indonesia</b> Jl. Salemba Raya 6, Jakarta Pusat 10430, Indonesia Tlp/fax: +62 21-3912477 E-mail: humas@fk.ui.ac.id	

Accredited (2013-2018) by the Directorate General of Higher Education of the Ministry of Education and Culture of the Republic of Indonesia (No:58/DIKTI/Kep/2013)  
 Published by the Faculty of Medicine, Universitas Indonesia, Jakarta, Indonesia  
 Official Scientific Journal of the Faculty of Medicine, Universitas Indonesia  
 in Collaboration with German-Indonesian Medical Association (DIGM)  
 pISSN 0853-1773 – eISSN 2252-8083  
<http://mji.ui.ac.id>

# Medical Journal of Indonesia

## TABLE OF CONTENTS

---

Volume 25, Number 3, September 2016, page 127-94, pISSN: 0853-1773 - eISSN: 2252-8083

---

### Editorial

- J.A. Pawitan      **Benefit of trehalosa preincubation prior to cryopreservation**      127

### Basic Medical Research

- I. Kusuma  
R.S. Hadi  
B. Kiranadi  
A. Boediono      **Trehalose preincubation increases mesenchymal (CD271<sup>+</sup>) stem cells post-cryopreservation viability**      129  
This study confirms the protective effect of trehalose preincubation prior to cryopreservation procedure. Preincubation enabled trehalose loading into cytoplasm although induced an osmolarity-driven toxicity.
- L. Indrawati  
P. Ascobat  
B. Bela  
M. Abdullah  
I.S. Surono  
S. Pramono      **Antiproliferative activity and caspase enhancement properties of *Annona muricata* leaves extract against colorectal cancer cells**      136  
*Annona muricata* leaves water extract and its fractions exhibit cytotoxic activities on colorectal cancer cells.

### Clinical Research

- M. Ekawati  
N. Mujihartini  
A.A. Jusuf  
N. Dharmasetiawani  
S.W.A. Jusman  
M. Sadikin      **Altered expressions of endothelial junction protein of placental capillaries in premature infants with intraventricular hemorrhage**      143  
Oxidative stress in hypoxic placental of preterm infants can impair junctional proteins, which subsequently lead to increase capillary permeability of endothelial layer.
- K.E.A. Abdelsalam      **Evaluation of cardiac function tests in Sudanese adult patients with sickle cell trait**      151  
The effect of sickle cell trait on cardiac function was assessed. The results indicate patient with sickle cell trait had an increase risk of having cardiac dysfunction.
- S. Syarifah  
K.B. Siregar  
Y. Siregar      **Association of ATP-binding cassette sub-family B member 1 gene C3435T polymorphism with neutropenia in breast cancer patients treated with chemotherapy**      156  
ABCB1 C3435T polymorphism had no association with the grading of neutropenia in breast cancer patients treated with doxorubicin-taxane regimen.
- E. Fakhrizal  
T. Priyatini  
B.I. Santoso  
Junizaf  
F. Moegni  
S. Djusad  
S.Hakim  
S.W. Maryuni      **Prevalence and risk factors of persistent stress urinary incontinence at three months postpartum in Indonesian women**      163  
Prevalence and several factors influenced a persistent stress urinary incontinence at three months postpartum.
- M.S. Alhussaini      **Incidence of *Candida* species colonization in neonatal intensive care unit at Riyadh Hospital, Saudi Arabia**      171  
*Candida* was a common cause of infections in infants. Most candidal infections were due to vertical transmission from the mother.

<b>D. Fakhri P.W. Busro B. Rahmat S. Purba A.A.P. Mukti M. Caesario K. Christy A. Santoso S.I Djauzi</b>	<b>Risk factors of sepsis after open congenital cardiac surgery in infants: a pilot study</b> This study was presented to evaluate risk factors associated with sepsis in infants undergoing open congenital cardiac surgery and only cardiopulmonary bypass time associated with incidence of sepsis.	<b>182</b>
--	---	------------

### ***Case Report***

<b>D.A. Devona M. Susiyanti</b>	<b>A rare case of cytomegalovirus papillitis in patient with immunodeficiency</b> A patient with AIDS originally treated as HSV infection was ultimately diagnosed as CMV papillitis after the treatment failure with acyclovir failed.	<b>190</b>
-------------------------------------	--	------------

**Front Page:** The expression of N-cadherin protein on endothelial layer of placental capillary in response to hypoxia condition as reported by Ekawati et al. that is published in this issue.

# Contents

---

**See the journal website for contents.**

# Medical Journal of Indonesia

## Instructions for Authors

### Submission

The submitted manuscript should be addressed to Editor-in-chief of the Medical Journal of Indonesia. Manuscript must be submitted through online submission (<http://mji.ui.ac.id/journal/index.php/mji/about/submissions>) by registered users. You can easily register in the journal system. For further question contact us at: [mji@ui.ac.id](mailto:mji@ui.ac.id).

### General Principles

As a basic requirement, all articles submitted to the Medical Journal of Indonesia must be original work, which has never been published previously and is submitted exclusively to the Medical Journal of Indonesia. They are written in the format of "Recommendations for the Conduct, Reporting, Editing and Publication of Scholarly Work in Medical Journals" (<http://www.icmje.org/>) updated August 2013 established by the International Committee of Medical Journal Editors (ICMJE). The Editorial Board reserves the right to edit all articles in aspects of style, format, and clarity. Authors may be required to revise their manuscripts for reasons of any aspect. Manuscripts with excessive errors in any aspect may be returned to authors for retyping or may be rejected. All manuscripts will be subjected to peer and editorial review.

We accept three types of articles: (1) original articles: **basic medical research**, **clinical research**, or **community research**; (2) **case report**; (3) **review article**; (4) **brief communication** (including **preliminary reports**).

Authors must also supply ICMJE conflicts of interest statement form ([http://mji.ui.ac.id/journal/public/journals/1/coi\\_disclosure.pdf](http://mji.ui.ac.id/journal/public/journals/1/coi_disclosure.pdf)), copy of ethical approval (when needed), and final checklist (<http://mji.ui.ac.id/journal/public/journals/1/FinalChecklist.pdf>) signed by all author(s).

Templates are available on <http://mji.ui.ac.id/journal/public/journals/1/template1.dot> for original articles and <http://mji.ui.ac.id/journal/public/journals/1/template2.dot> for case report.

### Study Ethics

All submitted papers containing animal experiments and/or involving human subjects should have obtained approval from an independent ethics committee. The copy of approval should be provided to editorial office as mentined above.

### Publication Ethics

This journal follows guidelines from Committee on Publication Ethics (COPE) in facing all aspects of publication ethics and, in particular, how to handle cases of research and publication misconduct.

### Structure and Language

Articles will be published in US English, following American spelling. Articles in English that are linguistically inadequate may be rejected. Printed manuscripts should be written double-spaced in all parts of the manuscript with margin of 2.54 cm of all sides. Articles must be submitted in the following structural order: title page and

authorship, abstract, keywords, text, conflicts of interest, acknowledgments (if any), references, tables, figures, and legends (if any).

### Title Page and Authorship

The title page should contain: title of the article (concise, no abbreviations, maximum 16 words); full names of authors (without academic title); author's affiliation [name(s) of department(s) and institution(s)]; disclaimers (if any); corresponding author's name, mailing address, telephone and fax numbers, and e-mail address of the author responsible for correspondence about the manuscript (E-mail address of the coresponding author will be published along with the article); source(s) of support in the form of grants, equipment, drugs, or all of these (if any); short running title [maximum 40 characters (letter and spaces)]; word counts [A word count for the text only (excluding abstract, acknowledgments, tables, figure legends, and references)]; number of figures and tables; and synopsis (should contain one or two sentences long with maximum 25 words describing the paper or its conclusion to be published in the table of contents of the Medical Journal of Indonesia).

Authorship of articles should be limited to those who have contributed sufficiently to take public responsibility for the contents. This includes (a) conception and design, or analysis and interpretation of data, or both; (b) drafting the article or revising it critically for important intellectual content; (c) final approval of the version to be published; (d) and agreement to be accountable for all aspects of the work in ensuring that questions related to the accuracy or integrity of any part of the work are appropriately investigated and resolved.

### Abstract and Keywords

The **abstract** should be prepared in English and in Bahasa Indonesia with a structured abstract maximum 250 words for biomedical, clinical, and community research articles; and unstructured maximum 150 words for case report, brief communication, and review article. For non-Indonesian authors, abstract in Bahasa Indonesia will be translated by the editor. They should be concise and precise with enough information, highlighting the points and importance of the article which contains: One or two sentences of background, purpose of study; methods (basic procedures, study subject selection, observational, and analytical methods); main findings or results; and principal conclusion. **Keywords** are limited to 3 - 6 words or short phrases that will allow proper and convenient indexing.

### Text

The **text** should be structured as **introduction**, **methods**, **results**, and **discussion** (IMRAD). Conclusion should be stated at last sentence in the discussion. Footnotes are not advisable; their contents should rather be incorporated into the text. Use only standard abbreviations; use of nonstandard abbreviations can be confusing to readers. Avoid abbreviations in the title of the manuscript. The spelled-out abbreviation followed by the abbreviation



in parenthesis should be used on first mention unless the abbreviation is a standard unit of measurement. If a sentence begins with a number, it should be spelled out. Cite in numerical order every reference, figure and table. Use Arabic numerals in superscript to cite references in Vancouver style.

## Statistical Methods

All **statistical methods** used should be describe in detail in the methods section of the manuscript. Avoid relying solely on statistical hypothesis testing, such as p values, which fail to convey important information about effect size. Define statistical terms, abbreviations, and most symbols. Specify the computer software used.

## Conflicts of Interest

**Conflict of interest** should declare the authors' conflicts of interest, sources of support for the work, and whether the authors had access to the study data. Each author should submit a separate form from ICMJE, given above and be sent to the office at submission. The description of conflict of interest in this form will be shown in this part.

## Acknowledgments

Personal **acknowledgments** should be limited to appropriate professionals who contributed to the paper, including technical help and financial or material support, also general support by a department chair-person.

## Tables

**Tables** and its title should be presented in separate sheets. Tables should be numbered in arabic numerals, captions should be brief, clearly indicating the purpose or content of each table. Provide a footnote to each table, identifying in alphabetical order all abbreviations used. Type or print each table with double-spacing on a separate sheet of paper. Number tables consecutively in the order of their first citation in the text and supply a brief title for each. Do not use internal horizontal or vertical lines. Give each column a short or an abbreviated heading. Explain all nonstandard abbreviations and explanatory matters in footnotes, and for explanatory matters use the following symbols, in sequence: \*, †, ‡, §, ||, ¶, \*\*, ††, ‡‡, §§, ||||, ¶¶, etc. Identify statistical measures of variations, such as standard deviation and standard error of the mean. Be sure that each table is cited in the text. If you use data from another published or unpublished source, obtain permission and acknowledge that source fully.

## Figures

**Figures** should be either professionally drawn or photographed, and submitted in a format (JPEG or TIFF) in the following resolutions [gray-scale or color in RGB (red, green, blue mode) at least 300 dpi (dots per inch). For x-ray films, scans, and other diagnostic images, as well as pictures of pathology specimens or photomicrographs, send sharp, glossy, black-and-white or color photographic prints, usually 127 x 173 mm (5 x 7 inches). Write the word "top" on the back of each figure at the appropriate place. Figures should be made as self-explanatory as possible, titles and detailed explanations

belong in the legends-not on the figures themselves. Photomicrographs should have internal scale markers. Symbols, arrows, or letters used in photomicrographs should contrast with the background. Photographs of potentially identifiable people must be accompanied by written permission to use the photograph.

Figures should be numbered consecutively according to the order in which they have been cited in the text. If a figure has been published previously, acknowledge the original source and submit written permission from the copyright holder to reproduce the figure. Permission is required irrespective of authorship or publisher except for documents in the public domain. Color figures are allowed in special circumstances, provided that the author is willing to cover the cost of reproduction.

If the original size of the figures is too large, you can provide us lower quality figures on submission and good quality after the acceptance of the manuscript.

## Legends for Figures

Type or print out **legends for figures** using double spacing, starting on a separate page, with Arabic numerals corresponding to the figures. When symbols, arrows, numbers, or letters are used to identify parts of the illustrations, identify and explain each one clearly in the legend. Explain the internal scale and identify the method of staining in photomicrographs.

## Units of Measurement

For measurements use S.I. (System International) units. Measurements should be abbreviated (e.g. mm, kcal, etc.) in accordance to the Style Manual for Biological Sciences and using the metric system. Measurements of length, height, weight, and volume should be reported in appropriate scientific units. Temperatures should be in degrees Celsius. Blood pressures should be in millimeters of mercury (mmHg). Drug concentrations may be reported in either SI or mass units, but the alternative should be provided in parentheses where appropriate.

## References

**References** is advisibly not to exceed 25 in number but not less than 10, and should in general be limited to the last decade. References must be numbered in the order in which they are mentioned in the text. Use the style of the examples below, which are based on the International Committee of Medical Journal Editors (ICMJE) Recommendations for the Conduct, Reporting, Editing and Publication of Scholarly Work in Medical Journals: Sample References ([http://www.nlm.nih.gov/bsd/uniform\\_requirements.html](http://www.nlm.nih.gov/bsd/uniform_requirements.html)). The titles of journals should be abbreviated according to the style used for MEDLINE ([www.ncbi.nlm.nih.gov/nlmcatalog/journals](http://www.ncbi.nlm.nih.gov/nlmcatalog/journals)). Avoid using abstracts as references. Information from manuscripts submitted but not yet accepted should be cited in the text as "unpublished observations" with written permission from the source. Papers accepted but not yet published may be included as references; designate the journal and add "Forthcoming". Avoid citing "personal communication" unless it provides essential information not available publically, name the person and date of

communication, obtain written permission and confirmation of accuracy from the source of a personal communication. Authors is recommended to use reference management software, in writing the citations and references such as: Mendeley®, Zotero®, EndNote®, and Reference Manager®.

Here are some examples of the references:

### 1. *Standard journal article*

Up to six authors, list all the authors.

- Halpern SD, Ubel PA, Caplan AL. Solid-organ transplantation in HIV-infected patients. *N Engl J Med.* 2002 Jul 25;347(4):284-7.

More than six authors, list the first six authors, followed by et al.

- Rose ME, Huerbin MB, Melick J, Marion DW, Palmer AM, Schiding JK, et al. Regulation of interstitial excitatory amino acid concentrations after cortical contusion injury. *Brain Res.* 2002;935(1-2):40-6.

Optional addition of a database's unique identifier for the citation: [Edited 12 May 2009]

- Halpern SD, Ubel PA, Caplan AL. Solid-organ transplantation in HIV-infected patients. *N Engl J Med.* 2002 Jul 25;347(4):284-7. PubMed PMID: 12140307.
- Forooghian F, Yeh S, Faia LJ, Nussenblatt RB. Uveitic foveal atrophy: clinical features and associations. *Arch Ophthalmol.* 2009 Feb;127(2):179-86. PubMed PMID: 19204236; PubMed Central PMCID: PMC2653214.

Optional addition of a clinical trial registration number: [Added 12 May 2009]

- Trachtenberg F, Maserejian NN, Soncini JA, Hayes C, Tavares M. Does fluoride in compomers prevent future caries in children? *J Dent Res.* 2009 Mar;88(3):276-9. PubMed PMID: 19329464. ClinicalTrials.gov registration number: NCT00065988.

As an option, if a journal carries continuous pagination throughout a volume (as many medical journals do) the month and issue number may be omitted.

- Halpern SD, Ubel PA, Caplan AL. Solid-organ transplantation in HIV-infected patients. *N Engl J Med.* 2002;347:284-7.

### 2. *Chapter in a book*

Meltzer PS, Kallioniemi A, Trent JM. Chromosome alterations in human solid tumors. In: Vogelstein B, Kinzler KW, editors. *The genetic basis of human cancer.* New York: McGraw-Hill; 2002. p. 93-113.

### 3. *Homepage/Web site* [Edited 12 May 2009]

Cancer-Pain.org [Internet]. New York: Association of Cancer Online Resources, Inc.; c2000-01 [updated 2002 May 16; cited 2002 Jul 9]. Available from: <http://www.cancer-pain.org/>.

## Copyright Licenses

Authors who publish with Medical Journal of Indonesia agree to the following terms:

1. Authors retain copyright and grant Medical Journal of Indonesia right of first publication with the work simultaneously licensed under a Creative Commons Attribution-NonCommercial License (<http://creativecommons.org/licenses/by-nc/4.0/>) that allows others to remix, adapt, build upon the work non-commercially with an acknowledgement of the work's authorship and initial publication in Medical Journal of Indonesia.
2. Authors are permitted to copy and redistribute the journal's published version of the work non-commercially (e.g., post it to an institutional repository or publish it in a book), with an acknowledgement of its initial publication in Medical Journal of Indonesia.

## Publication Fee

This journal only charges the article publication fee for all manuscript types, without any submission fee. The publication fee is US\$ 200 for foreign authors and IDR 2,000,000,- for Indonesian authors. For each printed page that contains colored figure, you will be asked to pay US\$ 50 (IDR 500,000,-) each printed page more.

When the accepted manuscript has been proofread by the authors, Medical Journal of Indonesia office will send the invoice to the corresponding author and they need to complete the payment process before being published.

To enhance the research in health programme, Medical Journal of Indonesia will cover the publication fee of authors from the countries that included in group A and group B countries of HINARI by WHO ([www.who.int/hinari/eligibility/en/index.html](http://www.who.int/hinari/eligibility/en/index.html)).

Updated - February 2014

# Medical Journal of Indonesia

## Final Checklist & Submission Form

Title of article:

Type:  Basic medical research       Community research       Review article  
 Clinical research       Case report       Brief communication

### 1. Manuscript Preparation

The author(s) affirm that the material has not been previously published and that the author(s) have not transferred elsewhere any rights to the article. The author(s) have checked the manuscript to comply with the instructions for authors of Medical Journal of Indonesia and agreed to contribute for publication fee.

### 2. Informed Consent

The author(s) haven't suggested any personal information that may make the identity of the patient recognizable in any forms of description part, photograph or pedigree. When the photographs of the patient were essential and indispensable as scientific information, the author(s) have received the consent in writing form and have clearly stated it.

### 3. Human and Animal Right

In case of experimenting on human, the author(s) have certified that the process of the research is in accordance with ethical standards of Helsinki declaration, domestic and foreign committees that preside over human experiment. If any doubts is raised whether the research was proceeded in accordance with the declaration, the author(s) would explain it. In case of experimenting on animals, the author(s) have certified that the author(s) had followed the domestic and foreign guideline related to experiment of animals in a laboratory.

### 4. Permission Approvals

The author(s) have received consent from the author or editor the picture or the table that was quoted from other journals or books. A portion or entire of the article hasn't been published on other journals nor contributed to other journals and under review.

### 5. Copyright Notice

The author(s) undersigned hereby give Faculty of Medicine Universitas Indonesia as publisher the right of first publication of all published material and licensed under a Creative Commons Attribution-NonCommercial 4.0 International (<http://creativecommons.org/licenses/by-nc/4.0/>).

### 6. Disclosure of Conflict of Interest

Author(s) of the journal have clarified everything that interest may arise such as work, research expenses, consultant expenses, and intellectual property on the document of ICMJE form disclosure of conflicts of interest.

Full Name:

Signature:

E-mail:

Date:

---

---

---

---

---

---

---

---

---

---

---

---

---

---

---

---

---

---

---

---

---

---

---

---

---

---

---

---



