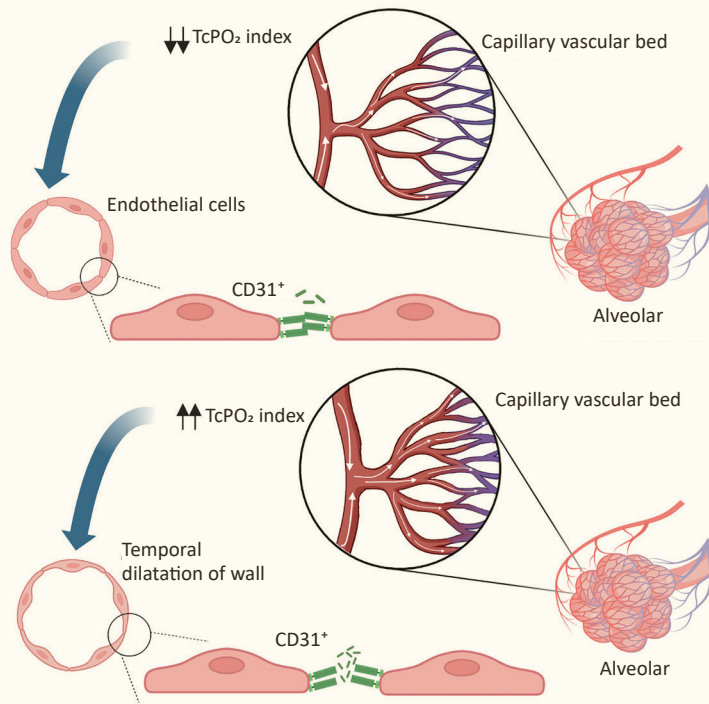
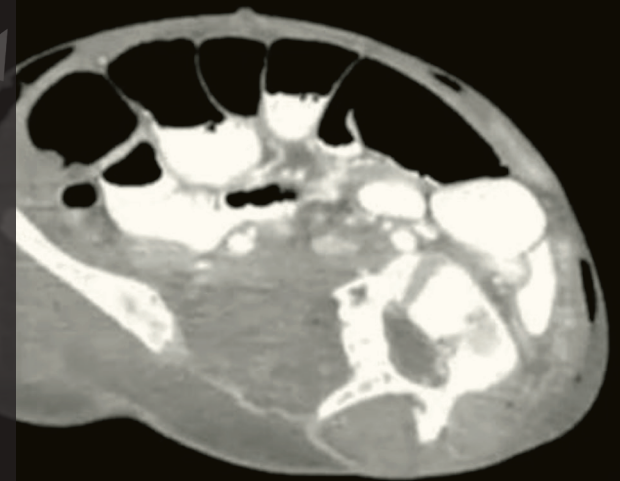


# Medical Journal of Indonesia



- ✓ AI in publishing: a new era for editors
- ✓ Molecular biomarkers in breast cancer
- ✓ Safety and immunogenicity of CoV2-Bio
- ✓ Lung recruitment impact in preemies
- ✓ Multi-artery kidney graft anastomosis
- ✓ Vitamin D and immune response regulation
- ✓ Reproduction after I-131 therapy
- ✓ Urinary calcium & Gla in urinary stones
- ✓ Syphilis predictors in HIV PrEP users
- ✓ Cecal volvulus with subcutaneous emphysema
- ✓ Hemoglobin constant spring



**mji**

<http://mji.ui.ac.id>

Published by the Faculty of Medicine Universitas Indonesia  
Official Scientific Journal of the Faculty of Medicine Universitas Indonesia  
in collaboration with German-Indonesia Medical Association (DIGM)  
Jl. Salemba Raya No. 6 Jakarta 10430  
Telp. +62-21-29189160 ext. 201605



# Medical Journal of Indonesia

The **Medical Journal of Indonesia** (abbr: Med J Indones) was founded in 1991 as the Medical Journal of the University of Indonesia (abbr: Med J Univ Indon). Since the first issue in 1992, it has been published quarterly, consistently, and continuously, covering a wide range of medical subject and issues from every medical specialist aspect. In 1995 the name was changed to Medical Journal of Indonesia which reflected the widening of its coverage beyond Universitas Indonesia. The mission of our journal is to provide biomedical scientist, clinical, and public health researchers as well as other health care professionals with the media to published their research works. Starting from 2011, Deutsch-Indonesische Gesellschaft für Medizin (DIGM) Medical Journal has been merged into Medical Journal of Indonesia. This also means that DIGM is officially collaborating with Medical Journal of Indonesia and Faculty of Medicine Universitas Indonesia as the owner and publisher. The mission of the Medical Journal of Indonesia is to improve health care management by providing high-quality articles from Indonesia and worldwide.

## Focus and Scope

Medical Journal of Indonesia focuses on promoting medical sciences generated from **basic sciences, clinical, and community or public health research** to integrate researches in all aspects of human health.

This journal publishes **original articles, reviews,** and also interesting **case reports**.

**Brief communications** containing short features of medicine, latest developments in diagnostic procedures, treatment, or other health issues that is important for the development of health care system are also acceptable.

**Correspondence articles** of our own published articles are welcome.

## Abstracting and Indexing

ACI; BASE; CAB Abstracts; CiteFactor; CNKI; Dimensions; EBSCO; Electronic Journals Library; Embase; ESCI; GARUDA; Global Health; Google Scholar; Hinari; IMSEAR; ISC; JournalTOCs; Microsoft Academics; PKP Index; Proquest; Scilit; Scopus; SINTA; Ulrichsweb Global Serial Directory; WorldCat.

## Open Access Policy

Medical Journal of Indonesia is an open-access journal which provides immediate, worldwide, and barrier-free access to the full text of all published articles without charge readers or their institutions for access. Readers have right to read, download, copy, distribute, print, search, or link to the full texts of all articles in Medical Journal of Indonesia.

## Preprint Policy

A preprint refers to the author's version of a research manuscript shared publicly on an online preprint platform before undergoing a formal peer-review process in a journal. Medical Journal of Indonesia allows the submission of preprint manuscripts with prior notice in the cover letter by providing a link to the preprint and a description of any revisions or changes made in the submitted manuscript. Preprints will not be regarded as prior publications and will not adversely affect the review process.

## Subscription

The price per volume (four printed issues): international USD 160 (surface postage included), for ASEAN countries USD 100 (surface postage included), for Indonesia IDR 400,000 (surface postage excluded).

## Advertising Policy

Editorial materials will not be influenced by advertisement. Readers can criticize the advertisement by sending it to the office. Advertisement will appear in the print or online version depending on request. For all inquiries, contact the Medical Journal of Indonesia editorial office at Medical Journal of Indonesia, Education Tower 6th floor, IMERI building, Faculty of Medicine Universitas Indonesia, Jalan Salemba Raya 6, Jakarta Pusat 10430, Indonesia; tel. +6221-29189160 ext. 201605; e-mail [mji@ui.ac.id](mailto:mji@ui.ac.id).

## Copyright Notice

Authors retain copyright and grant Faculty of Medicine Universitas Indonesia rights to publish the work licensed under a Creative Commons Attribution-NonCommercial 4.0 International License (<http://creativecommons.org/licenses/by-nc/4.0/>) that allows others to remix, adapt, build upon the work non-commercially with an acknowledgment of the work's of authorship and initial publication in Medical Journal of Indonesia.

### Editorial Office

#### Medical Journal of Indonesia

Jl. Salemba Raya 6, Jakarta Pusat 10430, Indonesia  
Tel: +6221-29189160 ext. 201605  
Mobile: +628111400115  
E-mail: [mji@ui.ac.id](mailto:mji@ui.ac.id)

### Published by

#### Faculty of Medicine Universitas Indonesia

Jl. Salemba Raya 6, Jakarta Pusat 10430, Indonesia  
Tel/fax: +62 21-3912477  
E-mail: [humas@fk.ui.ac.id](mailto:humas@fk.ui.ac.id)

### Printed by

#### UI Publishing

Komplek ILRC Gedung B Lt.1 & 2, Perpustakaan Lama Universitas Indonesia, Kampus UI, Depok, Jawa Barat 16424  
Tel: +6221-78888199/78888278  
Jl. Salemba Raya 4, Jakarta Pusat 10430  
Tel: +6221-31935373/31930172/31930252  
E-mail: [uipublishing@ui.ac.id](mailto:uipublishing@ui.ac.id)

Official Scientific Journal of the Faculty of Medicine, Universitas Indonesia  
in Collaboration with German-Indonesian Medical Association (DIGM)

Accredited journal (2024-2028) based on Ministerial Decree of the Minister of Research and Technology /Head of National Research and Innovation Agency of the Republic of Indonesia No. 169/M/KPT/2024.

# Editorial Board

---

<b>Editor-in-chief</b>	<b>Agus Rizal A.H. Hamid</b> Indonesia
<b>Editor-in-chief Emeritus</b>	<b>Isnani A.S. Suryono</b> Indonesia
<b>Deputy Editor-in-chief</b>	<b>Nafrialdi</b> Indonesia
<b>Managing Editor</b>	<b>Felix F. Widjaja</b> Indonesia

---

## Editorial Board Members

<b>Agnes Kurniawan</b> Indonesia	<b>Hans-Joachim Freisleben</b> Germany	<b>Laurentius A. Pramono</b> Indonesia
<b>Anna M. Singal</b> Indonesia	<b>Hans-Jürgen Mägert</b> Germany	<b>Markus Meyer</b> Germany
<b>Apriani Oendari</b> USA	<b>Hariyono Winarto</b> Indonesia	<b>Melva Louisa</b> Indonesia
<b>Ary I. Savitri</b> Indonesia	<b>Harrina E. Rahardjo</b> Indonesia	<b>Pradana Soewondo</b> Indonesia
<b>Aulia Rizka</b> Indonesia	<b>Inge Sutanto</b> Indonesia	<b>Rianto Setiabudy</b> Indonesia
<b>Bambang B. Siswanto</b> Indonesia	<b>Jeanne A. Pawitan</b> Indonesia	<b>Saleha Sungkar</b> Indonesia
<b>Dicky L. Tahapary</b> Indonesia	<b>Jörg Haier</b> Germany	<b>Sri W.A. Jusman</b> Indonesia
<b>Farrokh Habibzadeh</b> Iran	<b>Jose R.L. Batubara</b> Indonesia	<b>Theddeus O.H. Prasetyono</b> Indonesia
<b>Grace Wangge</b> Indonesia	<b>Knut Adermann</b> Germany	<b>Vivian Soetikno</b> Indonesia
<b>Haku Hotta</b> Japan		<b>Wilfred C.G Peh</b> Singapore

---

## Assistant Editors

<b>Dania Clarisa</b> Indonesia	<b>Marsha Mayra</b> Indonesia	<b>Raul Gonzales</b> Indonesia
<b>John Christian</b> Indonesia		<b>Salsa Billa As'syifa</b> Indonesia

---

## Layout Editors

<b>Ilham Afriansyah</b> Indonesia	<b>Tsania Faza</b> Indonesia
--------------------------------------	---------------------------------

# Medical Journal of Indonesia

Volume 34 • Number 1 • March 2025 • page 1–74 • pISSN: 0853-1773 • eISSN: 2252-8083

## Contents

### Editorial

- 1 Artificial intelligence, the state-of-the-art in scientific editing  
*John Christian, Salsa Billa As' syifa, Felix Firyanto Widjaja, Agus Rizal Ardy Hariandy Hamid*

### Basic Medical Research

- 4 Expression of DUSP1, LINC02202, and LINC01554 as a biomarker panel in the diagnosis and prognosis of breast cancer  
*Seyedeh Mahdieh Khoshnazar, Mandana Kazemi, Parnian Jahanbani, Mohammad Reza Moghare Abed, Shamim Afshoon*

### Clinical Research

- 11 Safety and immunogenicity of the CoV2-Bio in a healthy population aged 18 years and older in Indonesia  
*Suzy Maria, Ciho Olfriani, Sukamto Koesnoe, Rini Sekartini, Soedjatmiko, Bernie Endyarni Medise, Irene Yuniar, Wahyuni Indawati, Angga Wirahmadi, Rini Mulia Sari, Nuri Purwito Adi, Windri Retnaningdyah*
- 21 Effects of lung recruitment maneuver using mechanical ventilator in preterm infant microcirculation: a clinical trial  
*Adhi Teguh Perma Iskandar, Mulyadi Muhammad Djer, Bambang Supriyatno, Risma Kerina Kaban, Ahmad Kautsar, Anisa Rahmadhany, Fiolita Indranita Sutjipto, Suhendro, Najib Advani, Dewi Irawati Soeria Santoso, Joedo Prihartono, Tetty Yuniati*
- 30 Comparing anastomosis techniques on ischemia time in multi-arterial kidney grafts: a systematic review and meta-analysis  
*Bayu Hernawan Rahmat Muharia, Gerhard Reinaldi Situmorang, Nur Rasyid, Arry Rodjani, Ponco Birowo*
- 37 Vitamin D in regulating immune response in patients with recurrent pregnancy loss: a case-control study  
*Hasan Abd Ali Khudhair*
- 44 Reproductive function after radioactive iodine treatment for differentiated thyroid carcinoma patients: a systematic review  
*Aisyah Elliyanti, Zulva Aziza, Yulia Kurniawati, Daan Khambri, Arni Amir, Yusticia Katar*
- 58 Urinary calcium and matrix Gla protein levels in the kidney stones: a case-control study  
*Zulfikar Ali, Fradelino Esau Selanno, I Putu Gde Fredy Gunawan, Mohammad Sulchan, Ponco Birowo, Tri Indah Winarni*
- 63 Predictors of syphilis infection among HIV pre-exposure prophylaxis users  
*Thanh Nguyen Ai Tran, Thanh Vu-Tri, Vu Hoang Anh Nguyen, My-Tien Nguyen-Thi, Huyen-Trang Luu-Thi, Thanh-Thao Ly, Yen Thi Hoai Phan*

## Case Report/Series

- 68 Subcutaneous emphysema: an indirect sign of anastomotic leak in cecal volvulus  
*Vee Chuan Hoe, Shu Ning Kong, Peh Voon Yeow Gilbert, Muhammad Amirrul Nizam Razi, Rohamini Sibin, Firdaus Hayati*
- 71 Hematologic profile of hemoglobin constant spring and its co-inheritance with hemoglobin C:  
a case report  
*Sumaiyah Adzahar, Sharifah Sakinah Syed Abdul Rahman, Mohammad Hudzaifah Nordin, Nabilah Rameli*

**Front Page:** The lung recruitment maneuver (LRM) group showed a dilation of microcirculatory blood vessels and the presence of endothelial microparticles CD-31+/CD-42-, as reported by Iskandar et al, and subcutaneous emphysema (arrow) over the abdominal wall following right hemicolectomy, with the cecum appearing unhealthy due to microperforations and an anastomotic leak intraoperatively, as reported by Hoe et al. These are published in this issue.

# Contents

---

**See the journal website for contents.**

# Medical Journal of Indonesia

## Instructions for Authors

### Submission

The submitted manuscript should be addressed to Editor-in-chief of the Medical Journal of Indonesia. Manuscript must be submitted through online submission (<https://mji.ui.ac.id/journal/index.php/mji/about/submissions>) by registered users. You can easily register in the journal system. For further questions contact us at [mji@ui.ac.id](mailto:mji@ui.ac.id).

### General Principles

As a basic requirement, all articles submitted to the Medical Journal of Indonesia must be original work, which has never been published previously and is submitted exclusively to the Medical Journal of Indonesia. They must follow the latest version of "Recommendations for the Conduct, Reporting, Editing and Publication of Scholarly Work in Medical Journals" (<http://www.icmje.org/>), which was established by the International Committee of Medical Journal Editors (ICMJE). The Editorial Board reserves the right to edit all articles in aspects of style, format, and clarity. Authors may be required to revise their manuscripts for reasons of any aspect. Manuscripts with excessive errors in any aspect may be returned to authors for retyping or may be rejected. All manuscripts will be subjected to peer and editorial review.

We accept four types of articles: (1) original articles: **basic medical research, clinical research, or community research**; (2) **case report**; (3) **review article**; (4) **brief communication**; (5) **correspondence**. Authors must also supply:

ICMJE conflicts of interest statement form ([http://mji.ui.ac.id/journal/public/journals/1/coi\\_disclosure.pdf](http://mji.ui.ac.id/journal/public/journals/1/coi_disclosure.pdf)) (if there is any difficulties in accessing the form, you can directly visit <http://www.icmje.org/conflicts-of-interest/>); copy of ethical approval (for all researches involving human and animal); and final checklist (<http://mji.ui.ac.id/journal/public/journals/1/FinalChecklist.pdf>) signed by all author(s).

A cover letter should be provided along with the submission addressed to the Editor-in-chief of Medical Journal of Indonesia which should include a statement about all previous submissions of the manuscript and previous reports that might be regarded as redundant publication of the work. If the manuscript has been submitted previously to another journal, authors are encouraged to provide previous comments along with the responses to accelerate the review process. Author(s) also have to mention the work whether it has been presented in a congress/conference/seminar.

The template is provided for cover letter (<https://mji.ui.ac.id/journal/public/journals/1/template/Template-for-Cover-Letter.dotx>), original articles (<https://mji.ui.ac.id/journal/public/journals/1/template/Template-for-Original-Article>), and case report (<https://mji.ui.ac.id/journal/public/journals/1/template/Template-for-Case-Report.dotx>).

### Study Ethics

All submitted papers containing animal experiments and/or involving human subjects should have obtained approval from an independent ethics committee. The copy of approval should be provided to the editorial office as mentioned above.

### Informed Consent

For each article published in the Medical Journal of Indonesia (MJI) an informed consent should be obtained from each participant. Informed consent consists of written permission granted by a patient or a patient's relative on his/her behalf to publish any information, image, or case report associated with the patient's clinical condition on the MJI. The informed consent and patient confidentiality policies are in compliance with all relevant regulations regarding data/privacy protection and the Fourth Amendment 1945 Constitution of the Republic of Indonesia, Article 28(G).

The contents of patient consent form should be adjusted to the local regulations in which the study was conducted. The author must indicate, in the main text of the manuscript, whether informed consent was obtained, including consent to publish the study a patient enrolled in. The author may be requested by the journal's editor to submit the consent form. In some circumstances, informed consent requirements may be exempted from studies. The decision to require or waive informed consent must come from the ethics committee that reviewed and approved the study. For studies in which informed consent is waived, the author must submit the official approval letter from the ethics committee that indicates the waiver.

All identifiers, including but not limited to names, initials, dates of birth, medical record numbers, must be removed from the patient's data or information published on the manuscript.

On the submitted and published manuscripts, the patient's face must be blurred or, when applicable, the patient's eyes are concealed with black bars. Images, including from ultrasound results, conventional radiography, computed tomography images, pathology images, or images taken during a surgery, must be de-identified.

Absence of a patient consent form for an appropriate study will result in the submission rejection.

### Publication Ethics

The publisher of this journal is a member of Committee on Publication Ethics (COPE). This journal follows guidelines



from COPE in facing all aspects of publication ethics and, in particular, how to handle cases of research and publication misconduct. All articles in this journal involving human subjects should respect principles of research ethics as described in the Declaration of Helsinki and studies involving animals should obey the International Guiding Principles for Biomedical Research as developed by the Council for International Organization of Medical Sciences (CIOMS).

Medical Journal of Indonesia adapts COPE principle to meet high quality standard of ethics for publisher, editors, authors, and reviewers. As an essential issue, publication ethics need to be explained clearly to improve the quality of research worldwide. In this part, we explain the standard for editors, authors, and reviewers. In addition, publisher does not have the right to interfere with the integrity of the contents and only support to publish in timely manner.

### Clinical Trial Registration

The authors have to register all clinical trials to the publicly accessible registration in any registry as recommended by the ICMJE or integrated to the WHO International Clinical Trials Registry Platform (ICTRP) (<https://www.who.int/clinical-trials-registry-platform/network>) or in ClinicalTrials.gov, which is a data provider to the WHO ICTRP. The ICMJE defines a clinical trial as any research project that prospectively assigns people or a group of people to an intervention, with or without concurrent comparison or control groups, to study the relationship between a health-related intervention and a health outcome. The registration should be done prior to the conduct of the trial. The trial registration number should be provided at the end of the abstract.

### Systematic Review and Meta-Analysis Registration

The authors are encouraged to register their systematic review and meta-analysis to the PROSPERO (<https://www.crd.york.ac.uk/prospero/>), an open-access database of prospectively registered systematic reviews in health. The registration should be done prior to the data extraction. The authors who submit unregistered systematic review/meta-analysis should provide the reasons along with the cover letter for editorial consideration.

### Structure and Language

Articles will be published in US English, following American spelling. Articles in English that are linguistically inadequate may be rejected. Manuscripts should be written double-spaced in all parts of the manuscript using Times New Roman 12, with margin of 2.54 cm of all sides. Articles must be submitted in the following structural order: title page and authorship, abstract, keywords, text, conflicts of interest, acknowledgments (if any), funding disclosure, references, tables, figures, and legends (if any).

### Title Page and Authorship

The **Title Page** should contain: title of the article (concise, no abbreviations, maximum 16 words); full names of authors (without academic titles); authors' affiliations [name(s) of department(s) and institution(s)]; corresponding author's name, mailing address, telephone and fax numbers, and e-mail address (institution specific address and e-mail address of the corresponding author will be published along with the article); conflict of interest declaration for each author; short running title [maximum 40 characters (letters and spaces)]; source(s) of support in the form of funding, equipment, drugs, or all of these (if any); disclaimers (if any); acknowledgement (if any); word counts [A word count for the text only (excluding abstract, acknowledgments, tables, figure legends, and references)]; and number of figures and tables. To ensure the process of double blind peer-review, the authors should provide the file of title page in separate file. The template for title page is provided on <https://mji.ui.ac.id/journal/public/journals/1/template/template-for-cover-letter.docx>.

**Authorship** of articles should be limited to those who have contributed sufficiently to take public responsibility for the contents. This includes (a) conception and design, or analysis and interpretation of data, or both; (b) drafting the article or revising it critically for important intellectual content; (c) final approval of the version to be published; (d) and agreement to be accountable for all aspects of the work in ensuring that questions related to the accuracy or integrity of any part of the work are appropriately investigated and resolved. Contributors who meet fewer than all four criteria above should be listed in acknowledgments and the contributions should be specified. Corresponding authors should assure the permission of acknowledged individuals to be mentioned in the acknowledgment.

### Abstract and Keywords

The **abstract** should be formally structured and prepared in English with a maximum of 250 words for biomedical, clinical, and community research articles and systematic review or meta analysis; for case reports, brief communications, and narrative reviews, the **abstract** should not be structured formally and should not exceed a maximum of 150 words. Abstracts should be concise and precise with enough information, highlighting the points and importance of the article. It should contain: **background** and purpose of the study; **methods** (basic procedures, study subject selection, observational or analytical methods); main findings or **results**; and principal **conclusion**. **Keywords** are limited to 3–6 words or short phrases that will allow proper and convenient indexing. They should be obtained from Medical Subject Headings (MeSH®) (<https://meshb.nlm.nih.gov/search>) thesaurus produced by National Library of Medicine.

### Main Text

The main **text** should be structured as **introduction**, **methods**, **results**, and **discussion** (IMRAD). Methods

should provide clarity about how, why, and when the study was done. The methods section should include the statement of approval by local, regional, or national review board. It should also clearly describe the selection of the study's participants. Materials and equipment used should be identified in **methods** section by specifically giving the manufacturer's name and address in parentheses. References to all established methods must be given. All **statistical methods** used should be described in detail in the **methods** section of the manuscript. Relying solely on statistical hypothesis testing, such as *p* values should be avoided; instead, important information about effect size and precision of estimates should be provided. Statistical terms, abbreviations, and symbols should be defined. Computer software and version used should be specified. In the **results** section, data should be presented in a concise and precise way, either in figures or tables, but not the same finding in a figure and a table. Unnecessary figures and tables, as well as footnotes should be avoided and their contents incorporated into the text. In the end of the **discussion**, a conclusion should be stated.

## Statistical Methods

All **statistical methods** used should be described in detail in the methods section of the manuscript. Avoid relying solely on statistical hypothesis testing, such as *p* values, which fail to convey important information about effect size and precision of estimates. Define statistical terms, abbreviations, and most symbols. Specify the computer software and version used.

## Conflicts of Interest

**Conflicts of interest** should be transparent as detail as possible as provided in the ICMJE form as a standardized authors' disclosures. Financial and personal relationships are easily identifiable that might bias or be seen to bias the work. Funding sources for the work should be described specifically with explanations of the role of those sources and the authors should declare that the supporting sources had no involvement in specific role. The authors should declare that the authors had access to all the study and the sponsors did not intervene the data or the work. Each author should submit a separate form from ICMJE.

## Acknowledgments

**Personal acknowledgments** should be limited to appropriate professionals who contributed to the paper, including technical help and financial or material support, also general support by a department chairperson.

## Funding Sources

**Funding sources** for the work should be described specifically with explanations of the role of those sources and the authors should declare that the supporting sources had no involvement into nor influence on the content of the manuscript. This statement should be written separately and limited to the funding for the work. If funder(s) had any impact into or influence on

the design; data collection, management, analysis and interpretation of the data, the preparation, review, or approval of the manuscript or the decision to submit the manuscript for publication, their role must be disclosed in detail.

## Tables and Figures

Total of tables and figures are advisable not to exceed 6 in number. **Tables** and its title should be presented in separate sheets. Tables should be numbered in Arabic numerals with brief captions clearly indicating the purpose or content of each table. Provide a footnote to each table, identifying in alphabetical order all abbreviations used. Number tables consecutively in the order of their first citation in the text and supply a brief title for each. Do not use internal horizontal or vertical lines. Give each column a short or an abbreviated heading. Explain all nonstandard abbreviations and explanatory matters in footnotes, and for explanatory matters use the following symbols, in sequence: \*, †, ‡, §, ¶, \*\*, ††, ‡‡, §§, ¶¶, etc. Identify statistical measures of variations, such as standard deviation and standard error of the mean. Be sure that each table is cited in the text. If you use data from another published source, obtain permission and fully acknowledge that source.

**Figures** should be either professionally drawn or photographed, and submitted in a format (JPEG or TIFF) in the following resolutions [gray-scale or color in RGB (red, green, blue mode) at least 300 dpi (dots per inch)]. For x-ray films, scans, and other diagnostic images, as well as pictures of pathology specimens or photomicrographs, send sharp, glossy, black-and-white or color photographic prints, usually 127 × 173 mm (5 × 7 inches). Write the word "top" on the back of each figure at the appropriate place. Figures should be made as self-explanatory as possible; titles and detailed explanations belong in the legends-not on the figures themselves. Photomicrographs should have internal scale markers. Symbols, arrows, or letters used in photomicrographs should contrast with the background. When symbols, arrows, numbers, or letters are used to identify parts of the illustrations, identify and explain each one clearly in the legend. Explain the internal scale and identify the method of staining in photomicrographs. Photographs of potentially identifiable people must be accompanied by written permission to use the photograph.

Tables and figures should be numbered consecutively according to the order in which they have been cited in the text. If a table or figure has been published previously, acknowledge the original source and submit written permission from the copyright holder to reproduce it. Permission is required irrespective of authorship or publisher except for documents in the public domain using license of CC BY SA (<https://creativecommons.org/licenses/by-sa/4.0/legalcode>). Color figures are allowed in special circumstances, provided that the author is willing to cover the cost of reproduction. If the original size of the figures is too large, you can provide us lower quality figures on submission and ensure the availability of good quality figures after the acceptance of the manuscript.

## Units of Measurement

For measurements use both local and S.I. (System International) units. Measurements should be abbreviated (e.g. mm, kcal, etc.) in accordance with the Style Manual for Biological Sciences and using the metric system. Measurements of length, height, weight, and volume should be reported in appropriate scientific units. Temperatures should be in degrees Celsius. Blood pressures should be in millimeters of mercury (mmHg). Drug concentrations may be reported in either SI or mass units, but the alternative should be provided in parentheses where appropriate.

## Abbreviation

Use only standard abbreviations; use of nonstandard abbreviations can be confusing to readers. Avoid abbreviations in the title of the manuscript. When first mentioned, all abbreviations must be spelled out followed by the abbreviation in parenthesis, unless the abbreviation is a standard unit of measurement. Abbreviations must be spelled out when first mentioned in the abstract and main text. If a sentence begins with a number, it should be spelled out except in abstract.

## Supplementary File

A supplementary file is an additional document to provide further details related to the main text but is excluded due to space constraints or formatting limitations. It can include tables, figures, questionnaires, or other supporting materials that were referenced in the main text but not fully presented. The file is typically submitted along with the main manuscript and undergoes a peer-review process. The publication of a supplementary file would depend upon its importance in supporting the main text, decided solely by the Editor-in-Chief. Copyright regulations for a supplementary file refer to the copyright regulations for Tables and Figures. The authors are fully responsible for ensuring the accuracy and functionality of the file.

## References

Use Arabic numerals in superscript to cite **references** in National of Medicine style. **References** are advisably not to exceed 25 in number but not less than 10, and should in general be limited to the last decade, except for references to methods used: they must be cited no matter how old they are. More than 25 references may be accepted when it is necessary. References must be numbered in the order in which they are mentioned in the text. Use the style of the examples below, which are based on the International Committee of Medical Journal Editors (ICMJE) Recommendations for the Conduct, Reporting, Editing and Publication of Scholarly Work in Medical Journals: Sample References ([http://www.nlm.nih.gov/bsd/uniform\\_requirements.html](http://www.nlm.nih.gov/bsd/uniform_requirements.html)). The titles of journals should be abbreviated according to the style used for MEDLINE (<http://www.ncbi.nlm.nih.gov/nlmcatalog/journals>). Avoid using abstracts as references. Information from manuscripts submitted but not yet accepted should be cited in the text as “unpublished

observations” with written permission from the source. Papers accepted but not yet published may be included as references; designate the journal and add “Forthcoming”. Avoid citing “personal communication” unless it provides essential information not available publicly, name the person and date of communication, obtain written permission and confirmation of accuracy from the source of personal communication. Authors are recommended to use reference management software, in writing the citations and references such as: Mendeley®, Zotero®, EndNote®, and Reference Manager®.

Here are some examples of the references:

### 1. Standard journal article

Up to six authors, list all the authors.

- Halpern SD, Ubel PA, Caplan AL. Solid-organ transplantation in HIV-infected patients. *N Engl J Med.* 2002 Jul 25;347(4):284–7.

More than six authors, list the first six authors, followed by et al.

- Rose ME, Huerbin MB, Melick J, Marion DW, Palmer AM, Schiding JK, et al. Regulation of interstitial excitatory amino acid concentrations after cortical contusion injury. *Brain Res.* 2002;935(1-2):40–6.

Optional addition of a database’s unique identifier for the citation: [Edited 12 May 2009]

- Halpern SD, Ubel PA, Caplan AL. Solid-organ transplantation in HIV-infected patients. *N Engl J Med.* 2002 Jul 25;347(4):284–7. PubMed PMID: 12140307.
- Forooghian F, Yeh S, Faia LJ, Nussenblatt RB. Uveitic foveal atrophy: clinical features and associations. *Arch Ophthalmol.* 2009 Feb;127(2):179–86. PubMed PMID: 19204236; PubMed Central PMCID: PMC2653214.

Optional addition of a clinical trial registration number: [Added 12 May 2009]

- Trachtenberg F, Maserejian NN, Soncini JA, Hayes C, Tavares M. Does fluoride in compomers prevent future caries in children? *J Dent Res.* 2009 Mar;88(3):276–9. PubMed PMID: 19329464. ClinicalTrials.gov registration number: NCT00065988.

As an option, if a journal carries continuous pagination throughout a volume (as many medical journals do) the month and issue number may be omitted.

- Halpern SD, Ubel PA, Caplan AL. Solid-organ transplantation in HIV-infected patients. *N Engl J Med.* 2002;347:284–7.

### 2. Chapter in a book

Meltzer PS, Kallioniemi A, Trent JM. Chromosome alterations in human solid tumors. In: Vogelstein B, Kinzler KW, editors. *The genetic basis of human cancer.* New York: McGraw-Hill; 2002. p. 93–113.

### 3. Homepage/Web site [Edited 12 May 2009]

Cancer-Pain.org [Internet]. New York: Association of Cancer Online Resources, Inc.; c2000-01 [updated 2002 May 16; cited 2002 Jul 9]. Available from: <http://www.cancer-pain.org/>.

## Editorial Process

The submitted manuscript will be checked by an editor for its suitability with Medical Journal of Indonesia’s

focus and scope and for major methodological flaws within two weeks. Staff will work with the author to fulfill all the requirements within two weeks. Every submitted manuscript which passes this step will then be checked for plagiarism by Similarity Check. The manuscript needs to be re-worked if indicated for minor plagiarism and will be rejected if indicated for major plagiarism. The next step is a screening using Paperpal Preflight to assess the manuscript's eligibility before it proceeds to peer review. The manuscript that passed this will pass to the next stage. Then, an editor-in-charge and an editorial assistant will be assigned for the manuscript. Subsequently, the manuscript will go through peer-review process. The revisions may be required and will be re-evaluated by the editor-in-charge after the authors providing sufficient responses. The manuscript will be passed to the editor-in-chief for any further revision and ultimately will take an editorial decision. The accepted manuscript will undergo professional English editing by Editage. Afterwards, it will proceed to the copyediting stage for grammar and spelling corrections, standardization of the journal's in-house style, and improvements to tables, figures, and overall writing quality. The suggested changes will then be confirmed to the author to ensure they are consistent with the intended meaning. The incomplete revision of this stage will result in pending scheduled publication. Then, the manuscript will enter production stage for typesetting. A pdf file is sent to the author for review and there should be no more scientific revision. A failure to comply will result in a delay of the publication since it needs editor confirmation for the changes. It will be scheduled for publication after the payment has been received. The final approval is needed from the corresponding author before it is published. The manuscript submitted by one of the editorial team of the Medical Journal of Indonesia will be processed by other editorial board members who do not have any conflict of interest with the manuscript and follow the same editorial process.

## Peer Review

All submitted manuscripts (except editorial, commentary, and correspondence) in Medical Journal of Indonesia undergo double-blind peer review by at least two reviewers. All manuscripts are sent to the reviewers anonymously. Reviewers' comments are also sent anonymously to the corresponding author to take the necessary actions and responses. All reviewers are required to complete their evaluation within four weeks under the monitoring of the Medical Journal of Indonesia staff. On some occasions, the review process may take longer if reviewers need more time to complete their evaluation. If no assigned reviewer responds to the manuscript, the manuscript will be returned to the author with the option to either provide new reviewer recommendations, which will extend the timeline by another four weeks, or withdraw the submission. These options ensure a fair and timely review process while maintaining the quality and integrity of our publications.

## Correction and Retraction Policies

Medical Journal of Indonesia is committed to publish Correction (Errata and Corrigenda) or Retraction dependent on the situation and in accordance with the COPE Retraction Guidelines. In all cases, these notices are linked to the original article.

**Correction** consist of errata and corrigenda. **Errata** provide a means of correcting errors that occurred after proofreading process. This includes writing, typing, editing, or publication (e.g., a misspelling, a dropped word or line, or mislabeling in a figure) of a published article. The authors need to send direct email to the editorial office (mji@ui.ac.id) to ask for an erratum and the correction will be taken based on the last proofread provided. **Corrigenda** provides a means of correcting errors that are made by the authors but the errors should not alter the overall basic results or conclusions of a published article. Note that the addition of new data is not permitted. For corrections of a scientific nature or issues involving authorship, all disputing parties must agree, in writing, to publication of the Correction. For omission of an author's name, letters must be signed by the authors of the article and the author whose name was omitted. The editor who handled the article will be consulted if necessary. Medical Journal of Indonesia followed COPE Retraction Guidelines for **Retraction**.

## Publication Fee

This journal only charges the article publication fee for all manuscript types, without any submission fee. The publication fee is USD 400 for foreign authors and IDR 6,000,000,- for Indonesian authors. For each printed page that contains colored figure, you will be asked to pay USD 70 (IDR 1,000,000,-) more of each printed page. Authors who want to publish Corrigenda need to pay an additional charge of USD 70 (IDR 1,000,000) per each printed page. After the manuscript has been proofread by the corresponding author, Medical Journal of Indonesia office will send the invoice and the payment needs to be completed before being appeared online.

To enhance the research in health program, Medical Journal of Indonesia will cover the publication fee of authors from the countries that are included in group A and group B countries of HINARI by WHO. Waiver of payment is not only limited to those countries. All authors may ask a waive, and they need to send letter of waiver to editor-in-chief explaining the importance of the study and why author(s) need to be waived. The decision is made prior to the process of the review and it is the editors' privilege to approve or reject the request.

## Copyright Notice

Authors retain copyright and grant the Faculty of Medicine Universitas Indonesia rights to publish the work licensed under a Creative Commons Attribution-Non Commercial License (<http://creativecommons.org/licenses/by-nc/4.0/>) that allows others to remix, adapt, build upon the work non-commercially with

an acknowledgment of the works authorship and initial publication in Medical Journal of Indonesia. The copyright of articles published from 1992 to 2013 (Volume 22 Issue 4) is under exclusive copyright, which does not permit any copying or redistribution. Articles published from 2014 (Volume 23 Issue 1) to 2015 (Volume 24 Issue 3) are licensed under a Creative Commons Attribution-NonCommercial Share Alike 4.0 International (CC-BY-NC-SA) license, non-commercial use, including redistribution of any part of articles. However, any modifications or adaptations of materials from this period must be shared under the same license. Articles published from 2015 (Volume 24 Issue 4) onward are under a Creative Commons Attribution NonCommercial 4.0 International (CC-BY-NC) license, making them freely available for non-commercial use, including redistribution and modification, with proper attribution.

Authors are permitted to copy and redistribute the journal's published version of the work non-

commercially (e.g., post it to an institutional repository or publish it in a book), with an acknowledgment of its initial publication in Medical Journal of Indonesia. The commercial use of any article is not permitted without our prior written consent and payment of the appropriate fees, even if you are the author or the employer, funder or affiliate organization of the author of the article. For the purposes of these terms, commercial use means use in any manner that is primarily intended for or directed toward commercial advantage or monetary compensation, including but not limited to provision or distribution of any article or part of any article (including any abstract, figures or tables) in any format: to support marketing activities; in response to medical information requests; to support activities at a conference, exhibition or trade show; as resource material on a company or product-specific website. You may contact to our office at [mji@ui.ac.id](mailto:mji@ui.ac.id).

Updated - March 2025

# Medical Journal of Indonesia

## Final Checklist & Submission Form

Title of article: \_\_\_\_\_

---

### 1. Manuscript Preparation

The author(s) hereby affirm that I do substantial contributions to the conception or design of the work; or the acquisition, analysis, or interpretation of data for the work; AND drafting the work or revising it critically for important intellectual content; AND final approval of the version to be published; AND agreement to be accountable for all aspects of the work in ensuring that questions related to the accuracy or integrity of any part of the work are appropriately investigated and resolved. The author(s) affirm that the material has not been previously published and that the author(s) have not transferred elsewhere any rights to the article. The author(s) have checked the manuscript to comply with the instructions for authors of Medical Journal of Indonesia and agreed to contribute for publication fee.

### 2. Informed Consent

The author(s) haven't suggested any personal information that may make the identity of the patient recognizable in any forms of description part, photograph or pedigree. When the photographs of the patient were essential and indispensable as scientific information, the author(s) have received the consent in writing form and have clearly stated it.

### 3. Human and Animal Right

In case of experimenting on human, the author(s) have certified that the process of the research is in accordance with ethical standards of Helsinki declaration, domestic and foreign committees that preside over human experiment. If any doubts is raised whether the research was proceeded in accordance with the declaration, the author(s) would explain it. In case of experimenting on animals, the author(s) have certified that the author(s) had followed the domestic and foreign guideline related to experiment of animals in a laboratory.

### 4. Permission Approvals

The author(s) have received consent from the author or editor the picture or the table that was quoted from other journals or books. A portion or entire of the article hasn't been published on other journals nor contributed to other journals and under review.

### 5. Copyright Notice

The author(s) retain copyright and grant Faculty of Medicine Universitas Indonesia rights to publish the work licensed under a Creative Commons Attribution-Non Commercial License (<http://creativecommons.org/licenses/by-nc/4.0/>). Further information of this topic is available on <http://mji.ui.ac.id/journal/index.php/mji/copyright>.

### 6. Disclosure of Conflict of Interest

The author(s) of the journal have clarified everything that interest may arise such as work, research expenses, consultant expenses, and intellectual property on the document of ICMJE form disclosure of conflicts of interest.

Author's Name:

Signature:

E-mail:

Date:

\_\_\_\_\_

\_\_\_\_\_

\_\_\_\_\_

\_\_\_\_\_

\_\_\_\_\_

\_\_\_\_\_

\_\_\_\_\_

\_\_\_\_\_

\_\_\_\_\_

\_\_\_\_\_

\_\_\_\_\_

\_\_\_\_\_

\_\_\_\_\_

\_\_\_\_\_

\_\_\_\_\_

\_\_\_\_\_



